

# ANZ OILFIELD



**We offer solutions for smooth and trouble free  
Oilfield drilling operations**

OCTG ITEMS | CEMENTING TOOLS | COMPLETION TOOLS | CHEMICALS



ANZ OILFIELD SERVICES PRIVATE LIMITED

[www.anzoilfield.com](http://www.anzoilfield.com)

# ANZ OILFIELD



## *A Promising Beginning*

ANZ oilfield was established in 2019 and since then we have been performing consistently to excel and cater to the demands of our clients. Starting from tiny steps in the country and through the hard work we slowly could spread our wings and fly across the globe. From the past 3 years, we have attained the position of leaders in the market of oil and Gas Industry. The expertise in the supply of casing accessories, centralizers, float Equipment and the number of other primary cementing products to the Oil and Gas Industry is remarkably welcomed by clients and this keeps them attached to us and has enabled us to maintain long-lasting relationships. We have our offices in India, South- East Asia and the Middle East and manufacturing units at Delhi-NCR and Middle East which keep us linked to global clients.

# ANZ OILFIELD



## Retrievable Bridge Plug

ANZ Retrievable Bridge Plug is a high pressure plug for multiple zone and selective single zone operations such as acidizing, fracturing, cementing, and testing.

It features a large internal by-pass to reduce swabbing when running and retrieving. The by-pass closes during the setting of the plug and opens prior to releasing the upper slips to equalize pressure when unsetting. The by-pass is located directly below the upper slips to help wash debris when the by-pass is open.

This tool can be set in tension and compression. It can be set shallow in unsupported casing to contain pressure while working on wellhead equipment. It can be set in tension making it ideal for setting shallow to test wellhead equipment and also deep, high pressure wells.

The Wireline Retrievable Bridge Plug is a version of the Retrievable Bridge Plug that allows the plug to be set on wireline or with a hydraulic setting tool, and retrieved with tubing. It cannot be reset in the wellbore once it is unset, but it can be pulled, re-dressed and run again. A Wireline Adapter Kit is required for this version.

### FEATURES:

- Heavy-duty mandrel supports high hang-off weights
- Backup rings on O-rings seal for high pressure and temperature
- Tool joint connections are standard
- Rotationally locked end connections for torque transmission
- Quarter-turn set, pickup unset
- Standard automatic jay mechanism

### APPLICATION:

- High-pressure and high-temperature testing and treating operations
- Storm packer applications
- Drillstem and production testing



## Retrievable Bridge Plug

Casing				Bridge Plug
OD	Weight	Min. I.D.	MaxID	Tool OD
(In)	(Lbs./ft.)	(in)	(in)	(in)
4-1/2	9.5 - 13.5	3.920	4.090	3.750
5	11.5 - 15.0	4.408	4.560	4.280
	18.0 - 20.8	4.156	4.276	4.000
5-1/2	20.0 - 23.0	4.670	4.778	4.500
	14.0 - 20.0	4.778	5.004	4.625
6-5/8	24.0 - 32.0	5.675	5.921	5.500
7	26.0 - 32.0	6.094	6.276	5.875
	20.0 - 26.0	6.276	6.456	5.969
7-5/8	24.0 - 29.7	6.875	7.025	6.672
	33.7 - 39.0	6.625	6.765	6.453
8-5/8	28.0 - 40.0	7.725	8.017	7.531
9-5/8	32.3 - 43.5	8.755	9.001	8.500
	43.5 - 53.5	8.535	8.755	8.250
10-3/4	32.75-51.0	9.850	10.192	9.625
	51.0-65.7	9.560	9.850	9.312
11-3/4	42.0-71.0	10.586	11.084	10.375
13-3/8	54.5-77.0	12.275	12.615	12.00
14	82.5-101.5	12.688	12.876	12.438
16	65.0-109.0	14.688	15.250	14.438
18-5/8	87.5-117.5	17.439	17.775	17.00
20	133.0-169.0	18.376	18.730	18.00

## Retrievable Packer

Retrievable Packer consists is a compression set packer with hydraulic hold down that is designed to provide an extra measure of dependability for rugged service.

The hydraulic actuated upper hold down provides more than the usual surface area to assure the packer will not move up the hole.

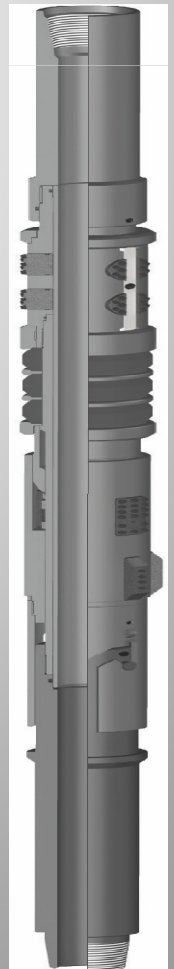
It is ideally suited for high pressure, high temperature service work.

Some unique features of the ANZ Retrievable Packer include positive rotational lock on all internal connections, which allow for extreme values of torque (left-and or right-hand) to be transmitted through the packer. Backup rings on all the o-rings provide for more reliable sealing at high temperature and pressure.

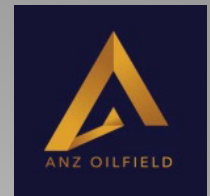
ANZ Retrievable Packer also come with extra long top and bottom subs, which allow for hydraulic tong make-up and break out.

### FEATURES:

- Hydraulic actuated upper hold down slips
- Positive rotational locks on all internal connections
- Back-up rings on all the O-rings provide for more reliable sealing at high temperature and high pressure
- Available with extra-long top and bottom subs allowing hydraulic tong make-up and break-out



# ANZ OILFIELD



## Retrievable Packer

Casing				Packer		
OD (in)	Weight (Lbs.)	Min. I.D. (in)	Max ID (in)	Max OD (in)	Min OD (in)	Standard Thread Connections
4-1/2	15.1-17.7	3.696	3.826	3.593	1.750	2-3/8" I.F.
	11.6-13.5	3.920	4.000	3.781	1.750	2-3/8" I.F.
5	15-18	4.276	4.408	4.125	1.750	2-3/8" I.F.
	11.5-15	4.408	4.560	4.250	1.750	2-3/8" I.F.
5-1/2	17-23	4.670	4.892	4.500	1.750	2-3/8" I.F.
	13-17	4.892	5.044	4.641	1.750	2-3/8" I.F.
7	38-46.4	5.626	5.920	5.525	2.688	3-1/2" I.F.
	32-38	5.920	6.094	5.781	2.688	3-1/2" I.F.
	26-32	6.094	6.276	5.954	2.688	3-1/2" I.F.
	17-23	6.366	6.538	6.188	2.688	3-1/2" I.F.
7-5/8	33.7-39	6.625	6.765	6.453	2.688	3-1/2" I.F.
	24-29.7	6.875	7.025	6.670	2.688	3-1/2" I.F.
9-5/8	58.4-59.4	8.407	8.435	8.250	3.750	4-1/2" I.F.
	43.5-53.5	8.535	8.755	8.365	3.750	4-1/2" I.F.
	32.3-43.5	8.755	9.001	8.584	3.750	4-1/2" I.F.
10-3/4	71.1-73.2	9.406	9.450	9.125	3.750	4-1/2" I.F.
	51-55.5	9.760	9.850	9.500	3.750	4-1/2" I.F.
11-3/4	60-71	10.586	10.772	10.406	3.750	4-1/2" I.F.
13-3/8	48-77	12.275	12.715	12.000	3.750	4-1/2" I.F.

## V-III Unloader Valve

ANZ V-III Unloader Valve is a high-pressure accessory tool for a compression-set service packer. ANZ V-III allows pressure to equalize above and below the packer before the packer is unset and permits fluid bypass during running in or out of the hole.

It can be locked in the open or closed position by a quarter-turn of the pipe. The valve can be equipped with tool joint connections, making it compatible with the DLT packer.

### FEATURES:

- Can be locked in open or closed position
- Large bypass area for fluid circulation
- Tool joint or tubing connections available
- Top connection keyed to prevent torque overload
- Unloader seals protected from fluid flow in open position
- High-strength alloy steel construction

### BENEFITS:

- Torque rating compatible with DLT Packer
- High-pressure and high-temperature rating for severe service
- Allows high circulation rates
- High hanging weight capacity for long tailpipe below packer
- Simple, rig-friendly operation

### APPLICATION:

- High-pressure and high-temperature testing and treating operations
- Drillstem and production testing





## V-III Unloader Valve

Size (in)	Max OD (In)	Min ID (In)	Standard Thread Connections
2-3/8	3.750	1.750	2-3/8" EU 8 RD
			2-3/8" I.F.
2-7/8	4.118	2.125	2-7/8" EU 8 RD
3-1/2	5.500	2.688	3-1/2" I.F.
4-1/2	7.250	3.750	4-1/2" I.F.



## Storm Valve

ANZ Storm Valve, which is run above the DLT Compression- Set Packer, provides a means to isolate the tubing below the packer and disconnect the running string by 22 turns of left-hand rotation. The running string can be reconnected, and the valve opened to equalize pressure for packer retrieval. The Storm Valve features an expendable plug that provides through-bore access for circulation or wireline passage.

### FEATURES:

- Valve closes automatically when disconnecting the running string
- Valve equalizes automatically when reconnecting running string
- Expendable plug for through-bore access
- Rugged alloy-steel construction
- Tool-joint connections

### BENEFITS:

- Simple to operate
- Compatible with compression packer operation
- Dependable design
- Easy to redress

### APPLICATION:

- Weather-related emergencies
- Wellhead repair





## Storm Valve

Valve Size (In)	Max. O.D. (in.)	Min. I.D. (in.)	Standard Thread Connections
4-3/4	4.750	1.490	3-1/2" IF
6-1/8	6.125	2.000	4-1/2" IF
	7.160	2.000	5-1/2" HT55-375

## Spring Loaded Retrieving Tool

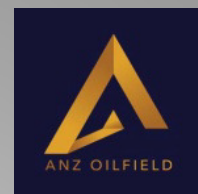
ANZ Spring Loaded Retrieving Tool is used to run and retrieve TSU Retrievable Bridge Plug

### FEATURES

- Mill-toothed shoe
- Sturdy design
- Left-hand release standard
- Straight set down to re-attach
- Right-hand release available



# ANZ OILFIELD



## Spring Loaded Retrieving Tool

Sizes (In)	Tool OD (inches)	Tool Thread Connection (Box Up)
3-1/2	2.75	1.900 EUE
4	3.125	1.900 EUE
4-1/2	3.625	2-3/8 EUE
	3.656	2-3/8 EUE
	3.75	2-3/8 EUE
5	4.125	2-3/8 EUE
	4	2-3/8 EUE
5-1/2	4.50	2-3/8 EUE
		2-7/8 EUE
6	5	2-3/8 EUE
6-5/8	5.437	2-7/8 EUE
7	5.875	2-7/8 EUE
7-5/8	6.375	2-7/8 EUE
8-5/8	7.5	3-1/2 EUE
9-5/8	8.250	3-1/2 EUE
		4-1/2 EUE
10-3/4	9.312	2-7/8 EUE
		3-1/2 EUE
11-3/4	10.37	4-1/2 EUE
13-3/8	11.75	4-1/2 EUE

## WBP Wireline Set Bridge Plug (Top / Bottom Set)

ANZ WBP Bridge Plug is designed to have excellent running characteristics and securely sets in any grade casing including P-110.

ANZ WBP Bridge Plug could be set using various available wireline pressure setting tools and could also be run and set using hydraulic setting tool however utilizing the available wireline adaptor kit.

The grey cast iron construction allows rapid drill-out while maintaining sufficient strength when set.

ANZ WBP Bridge Plug is rated to 10,000 Psi., suitable up to 350 F temperature rating.

Assorted elastomers i.e. Viton, Aflas are also available for high temperature applications.

### FEATURES:

- Field-proven design
- Constructed of drillable materials
- Standard packing element rated at 300°F
- One-piece slips
- Top set with shearstud

### APPLICATIONS:

- Well abandonment
- Temporary and permanent zonal isolation
- Squeeze cementing
- Fracturing



# ANZ OILFIELD



## WBP Wireline Set Bridge Plug (Top / Bottom Set)

CASING				PLUG		
SIZE (IN)	WEIGHT (LB/FT)	MIN. I.D. (IN.)	MAX. I.D. (IN)	PRESSUE RATING (PSI)	O.D. (IN.)	SET FORCE (LB-kg)
2-3/8	4.0 - 5.8	1.780	2.074	10,000	1.750	9,000
2-7/8	6.4 - 6.5	2.340	2.525	10,000	2.220	9,000
3-1/2	5.75 - 10.3	2.867	3.258	10,000	2.750	9,000
4	5.6 - 14.0	3.340	3.732	10,000	3.140	20,000
4-1/2	9.5 - 15.1	3.826	4.090	10,000	3.562	33,000
5	11.5 - 20.8	4.154	4.560	10,000	3.937	33,000
5-1/2	13.0 - 23.0	4.580	5.044	10,000	4.312	33,000
5-3/4	14.0 - 25.2	4.890	5.290	10,000	4.700	33,000
6-5/8	17.0 - 32.0	5.595	6.135	10,000	5.375	50,000
7	17.0 - 35.0	6.000	6.538	10,000	5.687	50,000
7	17.0 - 29.0	6.088	6.629	10,000	5.900	50,000
7-5/8	20.0 - 39.0	6.625	7.125	10,000	6.312	50,000
8-5/8	24.0 - 49.0	7.310	8.097	10,000	7.144	50,000
9-5/8	29.3 - 58.4	8.297	9.083	8,000	8.125	50,000
10-3/4	32.7 - 60.7	9.525	10.325	5,000	9.440	50,000
11-3/4	38.0 - 60.0	10.641	11.284	4,000	10.437	50,000
	60.0 - 83.0	10.368	10.935	4,000	9.937	50,000
13-3/8	48.0 - 84.5	12.202	12.879	3,000	11.880	50,000
16.0	65.0 - 118.0	14.576	15.444	2,000	14.125	50,000
18-5/8	87.5	17.480	18.000	2000	17.125	50,000
20.0	94.0 - 133.0	18.537	19.364	2,000	18.375	50,000

# ANZ OILFIELD



## Cement Retainer

Well Secure Cement Retainer can also be set on tubing/drill pipe/coil tubing using Hydraulic Setting Tool.

Opposing slips are carburized wicker type One-piece slips located above and below the rubber packing elements. The slips keep the cement retainer securely set-in high hardness alloy grade casings including P-110.

The packing elements are contained by brass back-up rings that eliminate extrusion of the elements at high temperatures and pressures.

Well Secure Cement Retainer utilizes a wireline adapter kit (WLAK) to connect to Baker PST and run-in hole.

Once set, a stringer is run on tubing/drill pipe or coil tubing in second trip and stung into the Well Secure Cement Retainer.

Squeeze operation can now begin, and the operator controls the two-way valve from the surface to hold the final squeeze pressure under the retainer or test tubing or keep hydrostatic pressure off the squeeze by manipulating the stringer assembly.

Straight pick up closes the valve and set down weight opens the valve. This retainer is ideal for where squeeze cementing operations are being performed

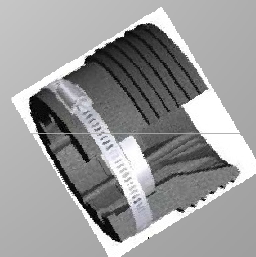
### FEATURES:

Cast iron drillable design

- Simple, surface-controlled valve automatically closes when the stinger is removed
- Converts between mechanical or wireline set by changing top slips
- Components rotationally locked for easy drill out
- Converts to a PBP Bridge Plug
- Temperature rating to 400 ° Fahrenheit
- Differential pressure rating to 10,000 psi thru 8-5/8"

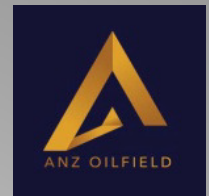


Cement Retainer



Mechanical Slip

# ANZ OILFIELD



## Cement Retainer

CASING				TOOL
O.D. (IN)	WEIGHT (LB/FT)	MIN. I.D. (IN)	MAX. O.D. (IN)	MAX. O.D. (IN.)
4-1/2	9.5 - 15.1	3.826	4.090	3.593
5	11.5 - 18.0	4.276	4.560	3.937
5-1/2	13.0 - 23.0	4.670	5.118	4.312
5-3/4	14.0 - 25.2	4.890	5.290	4.700
6-5/8	17.0 - 34.5	5.575	6.135	5.375
7	17.0 - 35.0	6.004	6.538	5.688
7-5/8	20.0 - 39.0	6.625	7.125	6.312
8-5/8	24.0 - 49.0	7.511	8.097	7.125
9-5/8	29.3 - 61.1	8.375	9.063	8.125
10-3/4	32.75 - 60.7	9.660	10.192	9.440
11-3/4	60.0 - 83.0	10.192	10.772	9.937
11-3/4	38.0 - 60.0	10.772	11.150	10.440
13-3/8	48.0 - 72.0	12.347	12.715	12.000
16	65.0 - 128.0	14.438	15.250	14.125
18	70.58 - 87.5	17.088	17.250	16.650
18-5/8	87.5	17.480	18.000	17.125
20	94.0 - 133.0	18.330	19.124	18.375
30	157.73 - 310.0	28.000	29.000	27.500



## Wireline Adapter Kit ( WLAK)

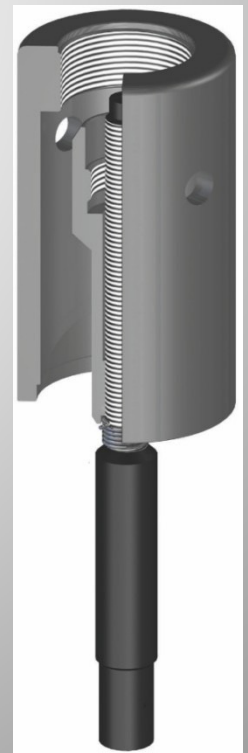
### Product Specification

Wireline Adapter Kit ( WLAK) for ANZ Cement Retainers and CR Bridge Plugs is used to set Cement Retainers and CR Bridge Plugs on electric wireline or with a hydraulic setting assembly on tubing.

The WLAK is designed to be used on a Baker E-4 wireline powder charge or hydraulic setting assembly or any setting assembly with the same configuration.

The WLAK automatically disconnects from the Bridge Plug during packer setting to be easily retrieved and prepared to run again.

Sizes (In)	Tool OD (inches)	Wireline setting Tool Box Up
4-1/2	3.500	BAKER E-4, #10
5-1/2	4.000	BAKER E-4, #20
7	5.688	BAKER E-4, #20
9-5/8	8.125	BAKER E-4, #20



## Mechanical Setting Tool (MST)

ANZ Mechanical Setting Tool (MST) is designed to run and mechanically set a Cement Retainer or converted Bridge Plug at any depth on tubing or drill pipe.

ANZ MST is used anytime it is advantageous to run a Cement Retainer or Bridge Plug on tubing or drill pipe. Cement Retainers can be set, pressure tested and squeezed in a single trip.

ANZ MST and Cement Retainer or Bridge Plug are sheared together and the slips are held in a retracted position for safer running.

### FEATURES:

- Allows single run for squeeze cementing
- Locked to cement retainer or bridge plug to avoid premature setting or loss
- Top slips partially covered to protect from accidental damage and pressure
- Will set other manufacturer's cement retainer or bridge plug

### APPLICATIONS:

- Setting cement retainers or bridge plugs on tubing or drill pipe
- Squeeze cementing
- Well abandonment
- Temporary and permanent zone isolation



Bow Spring Type MST

Drag Block Type MST

# ANZ OILFIELD



## Mechanical Setting Tool (MST)

CASING		DRAG BLOCK		MST SETTING TOOL	
SIZE (IN)	WEIGHT (LB/FT)	EXPANDED (IN.)	COLLAPSED (IN.)	MIN. I.D. (IN.)	THREAD CONNECTIO BOX UP
4-1/2	9.5 - 13.5	4.283	3.750	.75	2-3/8" EU 8 RD
5.00	18.0 - 21.0	4.375	3.815	.75	2-3/8" EU 8 RD
	15.0 - 18.0	4.490	4.015	.75	2-3/8" EU 8 RD
	11.5 - 15.0	4.660	4.230	.75	2-3/8" EU 8 RD
5-1/2	17.0 - 234.0	5.150	4.500	.75	2-3/8" EU 8 RD
	13.0 - 17.0	5.250	4.600	.75	2-3/8" EU 8 RD
6-5/8	24.0 - 32.0	6.355	5.500	1.250	2-7/8" EU 8 RD
7.00	29.0 - 38.0	6.355	5.500	1.250	2-7/8" EU 8 RD
	17.0 - 32.0	6.930	5.920	1.250	2-7/8" EU 8 RD
7-5/8	24.0 - 45.3	7.325	6.370	1.250	2-7/8" EU 8 RD
8-5/8	28,0 - 52.0	8.190	7.235	1.250	2-7/8" EU 8 RD
9-5/8	32.0 - 61.0	9.190	8.235	1.250	2-7/8" EU 8 RD
10-3/4	51.0 - 81.0	10.065	9.110	1.250	2-7/8" EU 8 RD
	32.75 - 60.7	10.425	9.470	1.250	2-7/8" EU 8 RD
11-3/4	38.0 - 65.0	11.500	10.545	1.250	2-7/8" EU 8 RD
13-3/8	48.0 - 72.0	13.450	12.110	1.250	2-7/8" EU 8 RD
16.000	84.0 - 118.0	15.190	14.000	1.250	4-1/2" IF

## Premium Hydraulic Set Retrievable Packer

ANZ Hydraulic-Set Retrievable Packer is a compact, economical, packer designed for low- to medium-pressure applications.

The short body length makes it ideal for tight radius deviations and horizontal applications. The packer requires no downward mandrel movement for setting, allowing stacked applications. Straight pull releases the packer, and built-in bypass ports equalize pressure across the packer for ease in retrieval. The shear-release mechanism is isolated from the packer hydraulics to allow low release forces, even at full pressure differential.

### Features & Benefits

- No downward mandrel movement for setting
- Low setting pressure: 3,500 psi minimum
- Straight-pull release, adjustable up to 55,000 lb
- Shear screws isolated from hydraulic pressure
- Short overall length
- Pressure differential rating: 6,000 psi
- Material: L-80 or equivalent for H<sub>2</sub>S service
- Temperature rating: 275°F (standard trim)

### Application

- Offshore oil and gas completions
- Highly deviated wells and doglegs
- Stacked packer completions
- Coiled tubing completions



# ANZ OILFIELD



## Premium Hydraulic Set Retrievable Packer

CASING		SETTING PRESSURE	MAX. O.D. OF TOOL (IN.)	MIN. I.D. OF TOOL (IN.)	END CONNECTION
SIZE (IN)	WEIGHT (LB/FT.)	MINIMUM (PSI)			
5.500	14.0 - 17.0	3,500	4.625	1.940	2-3/8" EUE
	20.0 - 23.0	3,500	4.500	1.940	2-3/8" EUE
6.625	20.0 - 24.0	3,500	5.661	2.375	2-7/8" EUE
	24.0 - 28.0	3,500	5.625	2.375	2-7/8" EUE
	28.0 - 32.0	3,500	5.438	2.375	2-7/8" EUE
7.000	17.0 - 20.0	3,500	6.250	2.375	2-7/8" EUE
	17.0 - 20.0	3,500	6.250	2.900	3-1/2" EUE
	20.0 - 26.0	3,500	6.000	2.375	2-7/8" EUE
	20.0 - 26.0	3,500	6.000	2.900	3-1/2" EUE
	23.0 - 29.0	3,500	6.000	2.375	2-7/8" EUE
	23.0 - 29.0	3,500	6.000	2.900	3-1/2" EUE
	26.0 - 32.0	3,500	5.891	2.375	2-7/8" EUE
	26.0 - 32.0	3,500	5.891	2.900	3-1/2" EUE

# ANZ OILFIELD



## Composite Bridge Plug

ANZ Composite Bridge Plug is a non metallic high-quality tool primarily used for temporary isolation in Intervention wells (thru tubing), multi-stage vertical or horizontal completion operations.

Comprised of proprietary composite material for use in high temperature applications, the bridge plug can be quickly and easily milled and circulated back to surface.

### Features and Benefits

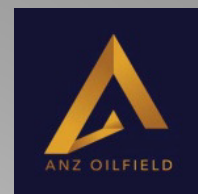
- Consistent drill times of 30 minutes or less
- Can be set on wireline or coiled tubing using conventional setting tools
- Can be milled or drilled with coiled tubing or a rig
- Positive seal after setting
- Maximum surge potential of formation after perforating
- High differential pressure rating
- Low temp and high temp materials conducive to a wide range of environments
- Setting is done via a universal setting sleeve and adapter

### Application

- Temporary or Permanent well abandonment
- Temporary or Permanent zonal isolation
- Operations where rapid removal is desired
- High-Pressure/High-Temperature wells



# ANZ OILFIELD



## Composite Bridge Plug

Casing		Maximum	Tool Details		
OD	Weight	Tool OD	Setting Tool	Maximum Temperature	Maximum Pressure
(In)	(Lbs./ft.)	(in)		(°F)	(PSI)
4-1/2	18.8 - 20.0	3.38	#10 WLAK/ Long Stroke or Multistage Setting Tool	300/400	10,000
	15.1 - 17.1	3.44			
	9.5 - 13.5	3.57			
5-1/2	23.0 - 26.8	4.13	#20 WLAK / Long Stroke  or  Multistage Setting Tool	300/400	10,000
	15.5 - 20.0	4.3			
	14.00	4.6			
7	23.0 - 32.0 17.0 - 20.0	3.562			

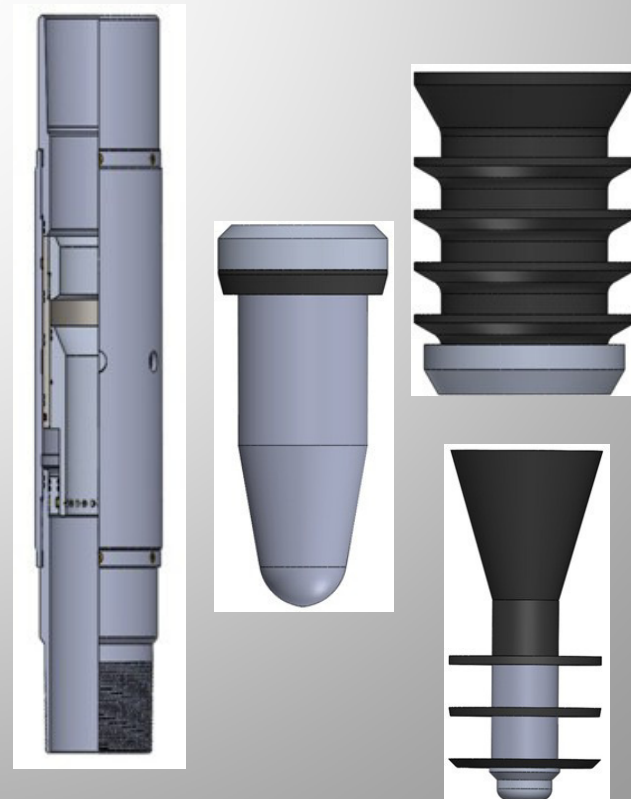
## Stage Cementing Tool ( Hydraulic )

The Slim Hole Stage Cementing Collar has been designed for stage cementing applications where the annular spaces dictate the use of a reduced OD stage collar.

The design features two internal sleeves that shift during the stage cementing operations. The bottom sleeve is shifted open hydraulically by increasing the pressure within the casing; opening pressure is field adjustable.

Closing of the stage cementing collar is achieved through the pumping of a closing plug behind second stage cement and applying pressure upon completing displacement. This Type can also be used in liner applications when the closing plug has been adapted to fit the closing seat in the stage collar.

Stage tool drill-out materials are all PDC drillable aluminum, rubber and phenolic.





# ANZ OILFIELD



## Stage Cementing Tool ( Hydraulic )

Casing Size	Max Diameter	Weight	Drill out I.D	Overall Length	Opening		Closing		Opening pressure /FREE-FALL DEVICE P.S.I
					Pressure P.S.I	Force L.B.S	Pressure P.S.I	Force L.B.S	
5"	6.125	15-18	4.400	29" (approx)	3000	14,000	1500	25,000	1100
7"	8.275	26-29	6.200	31" (approx)	2600	28,000	1500	57,000	1000
9 5/8"	11.125	43.5-53.5	8.600	32" (approx)	2400	50,000	1500	111,000	1000
13 3/8"	15.000	61-72	12.375	33" (approx)	2100	83,000	1500	19500	900

## Stage Cementing Tool ( Mechanical )

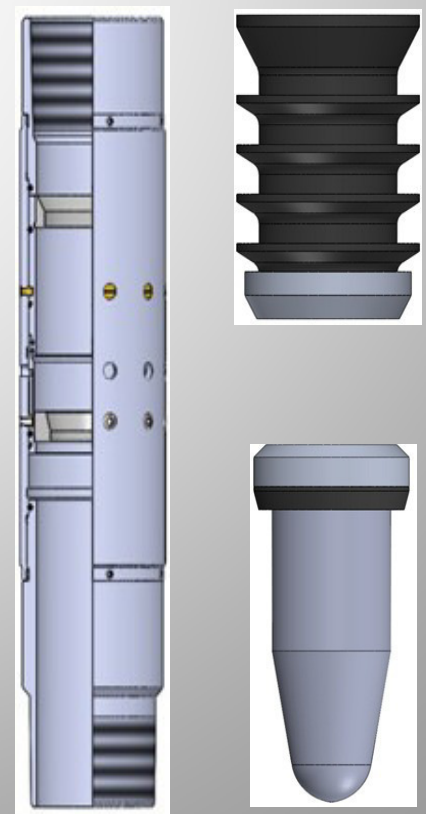
Mechanical Stage collar ( Mechanical stage cementing tool) allows cementing of casing string in two stages.

These collar set the standard for reliability, cost effectiveness, and ease of use with outstanding built-in features and quality. They are the collars of choice when drilling requirements call for proven technology and low risk.

The compact, simple design minimizes the number of moving parts and makes the tools easier to handle.

The collar's clear opening and closing indications at the surface accommodate the hydraulic conditions of the well for safer, more efficient operations. The internal sleeves increase reliability and prevent premature opening from formation restrictions on applied pressures.

It reduces total pumping pressure in long casing strings.



# ANZ OILFIELD



## Stage Cementing Tool ( Mechanical )

Casing Size	Max Diameter	Weight	Drill out I.D	Overall Length	Closing		Opening pressure/ Free Fall Device (P.S.I)
					Pressure PSI	Force LBS	
5"	6.125	15-18	4.400	29" (approx)	1500	25,000	1100
7"	8.275	26-29	6.200	31" (approx)	1500	57,000	1000
9 5/8"	11.125	43.5-53.5	8.600	32" (approx)	1500	111,000	1000
13 3/8"	15.000	61-72	12.375	33" (approx)	1500	19500	900

# ANZ OILFIELD



## **ANZ OILFIELD SERVICES PRIVATE LIMITED**

B-2/113, Sanalli Infopark, Hyderabad, Telangana - 500034, India

Phone : 0091-9711097761, 9711153007

Email: [info@anzoilfield.com](mailto:info@anzoilfield.com), URL: [www.anzoilfield.com](http://www.anzoilfield.com)