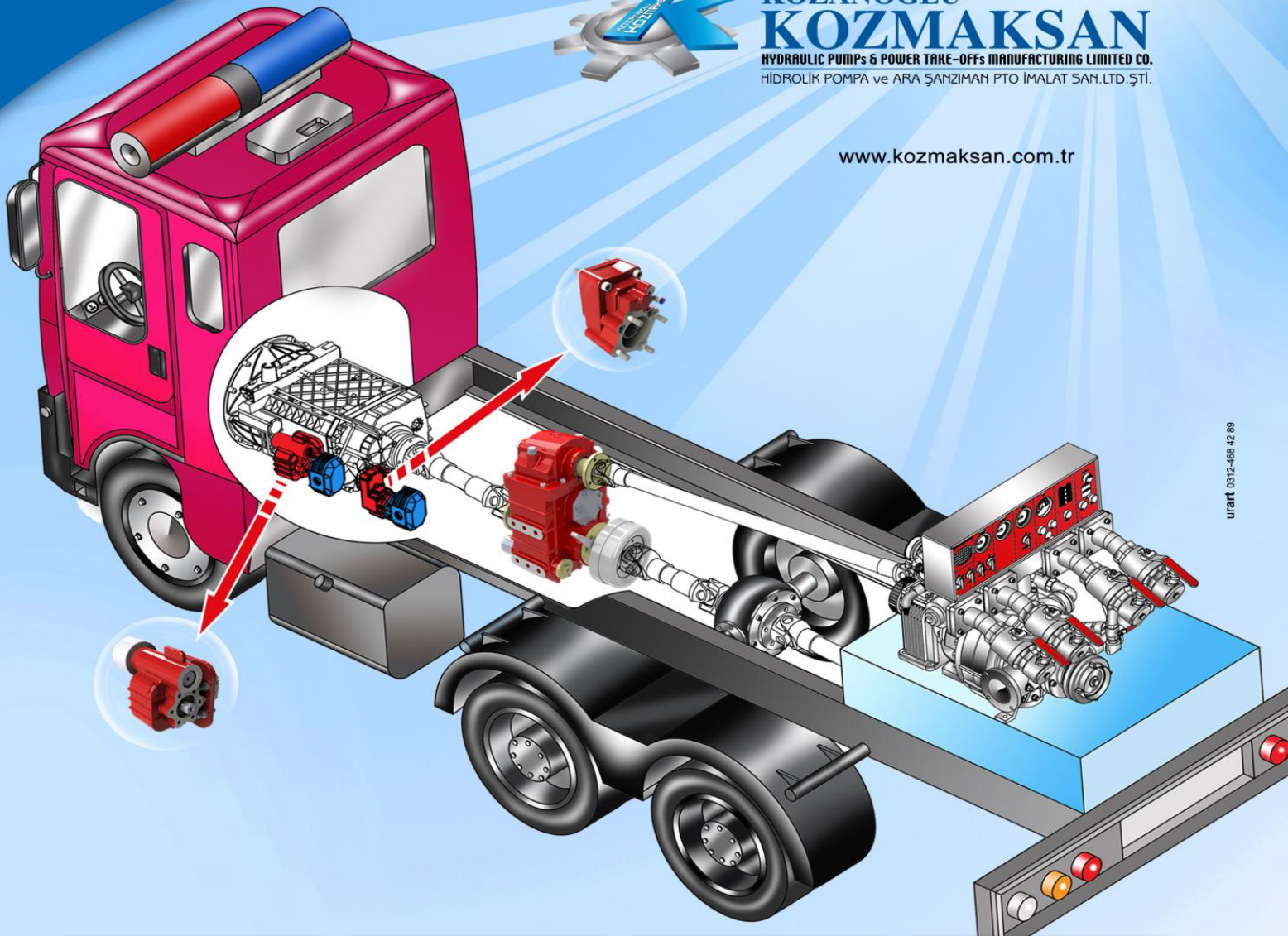


" YOUR SOLUTION PARTNER ON MOBILE HYDRAULIC APPLICATIONS "

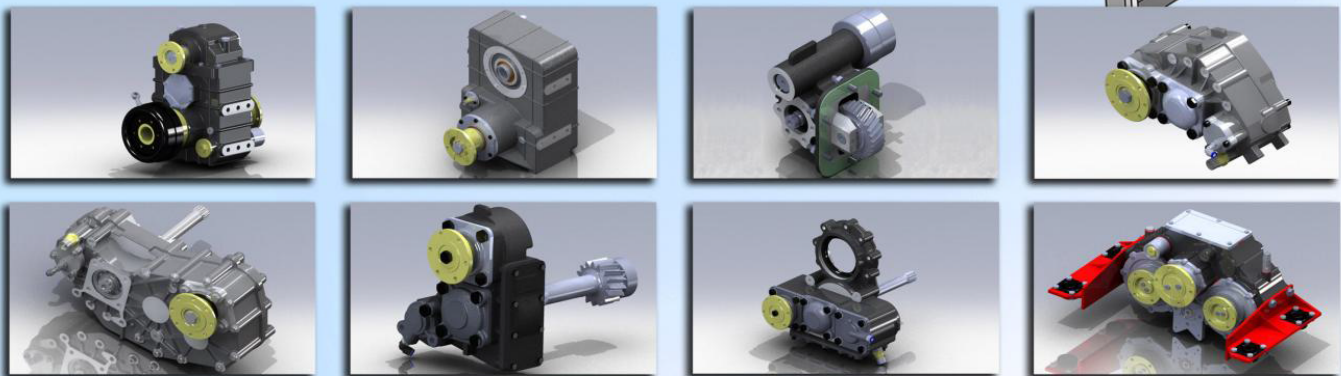


**KOZANOĞLU
KOZMAÇSIN**
HYDRAULIC PUMPS & POWER TAKE-OFFS MANUFACTURING LIMITED CO.
HİDROLİK POMPA ve ARA ŞANZİMAN PTO İMALAT SAN.LTD.ŞTİ.

www.kozmaksan.com.tr



urart 0312-466 42 89



Ofis: 7. Sokak No:9 (06370) Ostim - ANKARA - TURKEY Tel:(+90312) 354 05 39 - pbx Fax : (+90312) 354 34 59
Fabrika: ASO 1. Organize Sanayi Bölgesi Erkunt Cad. No:6 Sincan - ANKARA - TURKEY Tel : (+90312) 267 39 71 (pbx) Fax : (+90312) 267 38 72

SPLIT SHAFT PTO KATALOG 2012

TOPGEARS
SKRZYNIĘ ROZDZIELCZE SPLIT-SHAFT PTO

Biuro Handlowe:
TOP GEARS
ul. Ekologiczna 8/15, 02-798 Warszawa
Tel. +48 22 203 49 95
email: biuro@topgears.pl
www.topgears.pl

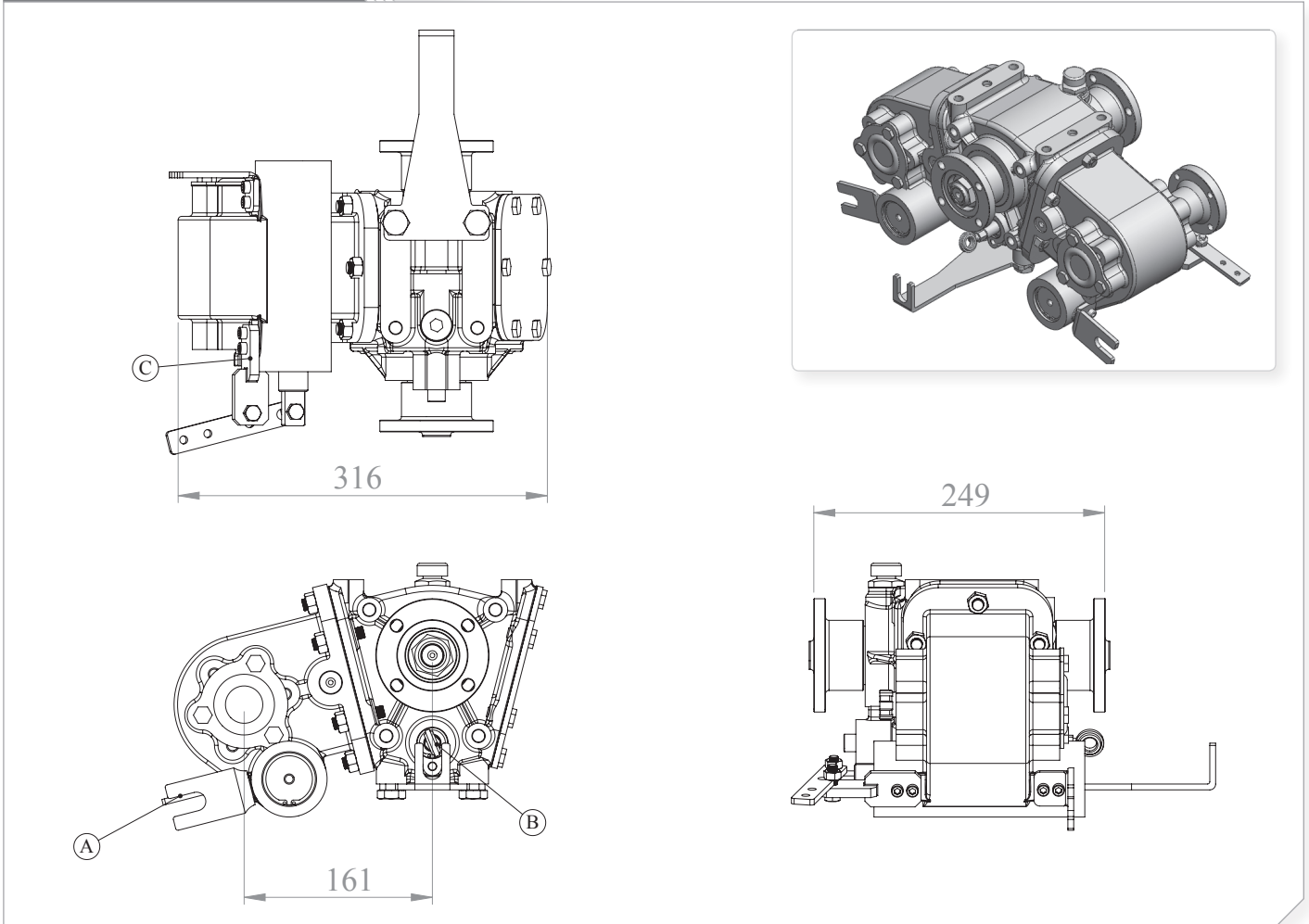


Typ pojazdu Vehicle Type	FORD TRANSIT-MERCEDES SPRINTER-VOLKSWAGEN-LIA BONGO-OPEL-FI AT-BMC
Skrzynia biegów Gearbox Type	

Kod Produktu / Product Code
UARA.210



Widok / Products View



Opcje / Options

A : Sterowanie PTO (Mechaniczne/Pneumatyczne)	A : PTO's Control (Mechanic/Pneumatic)
B : Sterowanie Split Shaft (Mechaniczne)	B : Split Shaft Unit Control (Mechanic)
C : DIN 5463 (6x21x25)	C : DIN 5463 (6x21x25)

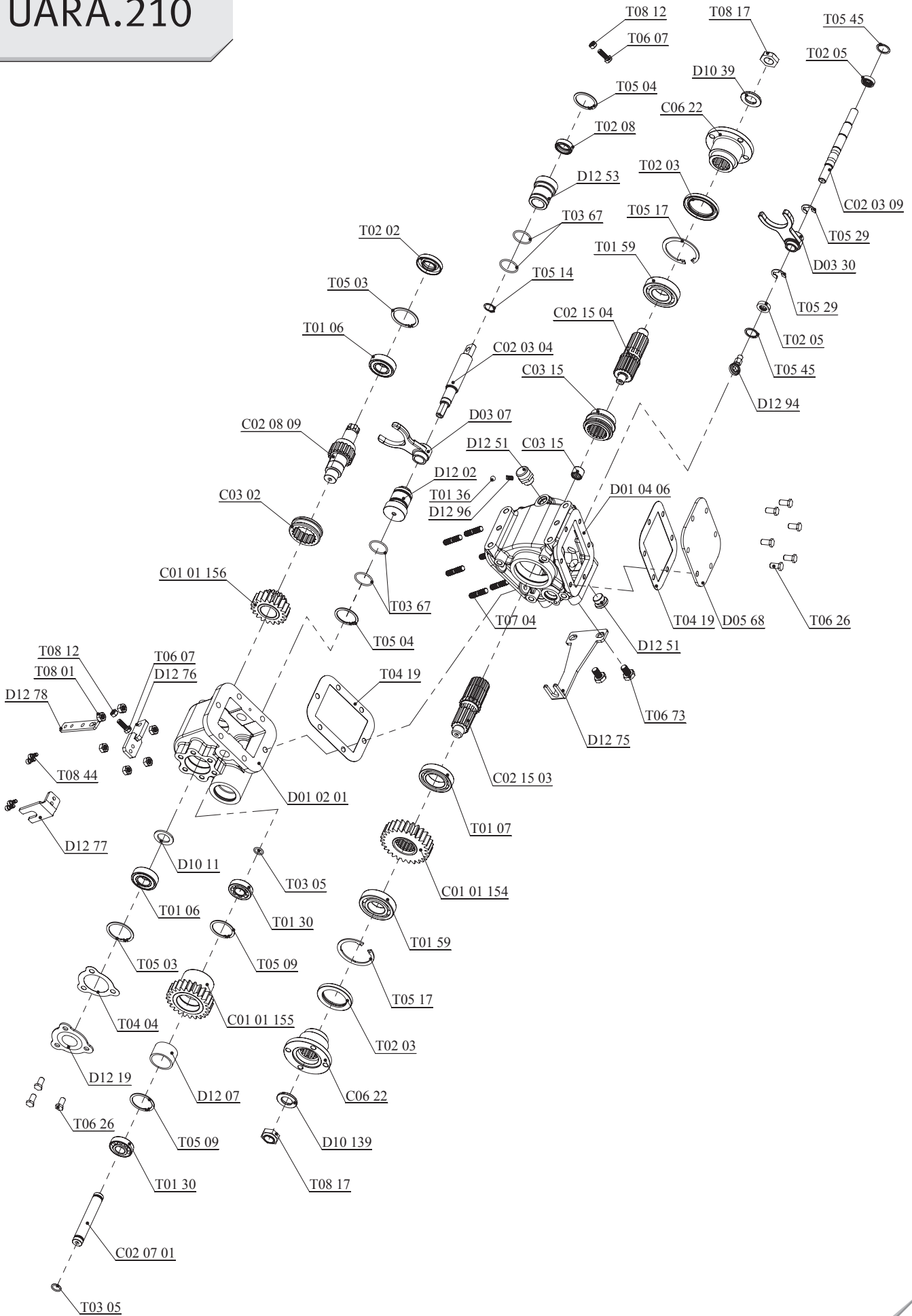
Dane techniczne/ Technical Dat

Moc / Power (Kw) 1000 Dak.	Maximum Torque (Kw)		Ratio	Mounting Sbuka	Control Type
	Nm	Kgm			
22	245	25X2	1/1.42	SHAFT	PNEUMATIC - MECHANIC
				Weight (Kg)	Rotation Sense
				36	COUNTERCLOCKWISE (CCW)



Biuro Handlowe:
TOP GEARS
ul. Ekologiczna 8/15, 02-798 Warszawa
Tel. +48 22 203 49 95
email: biuro@topgears.pl
www.topgears.pl

UARA.210

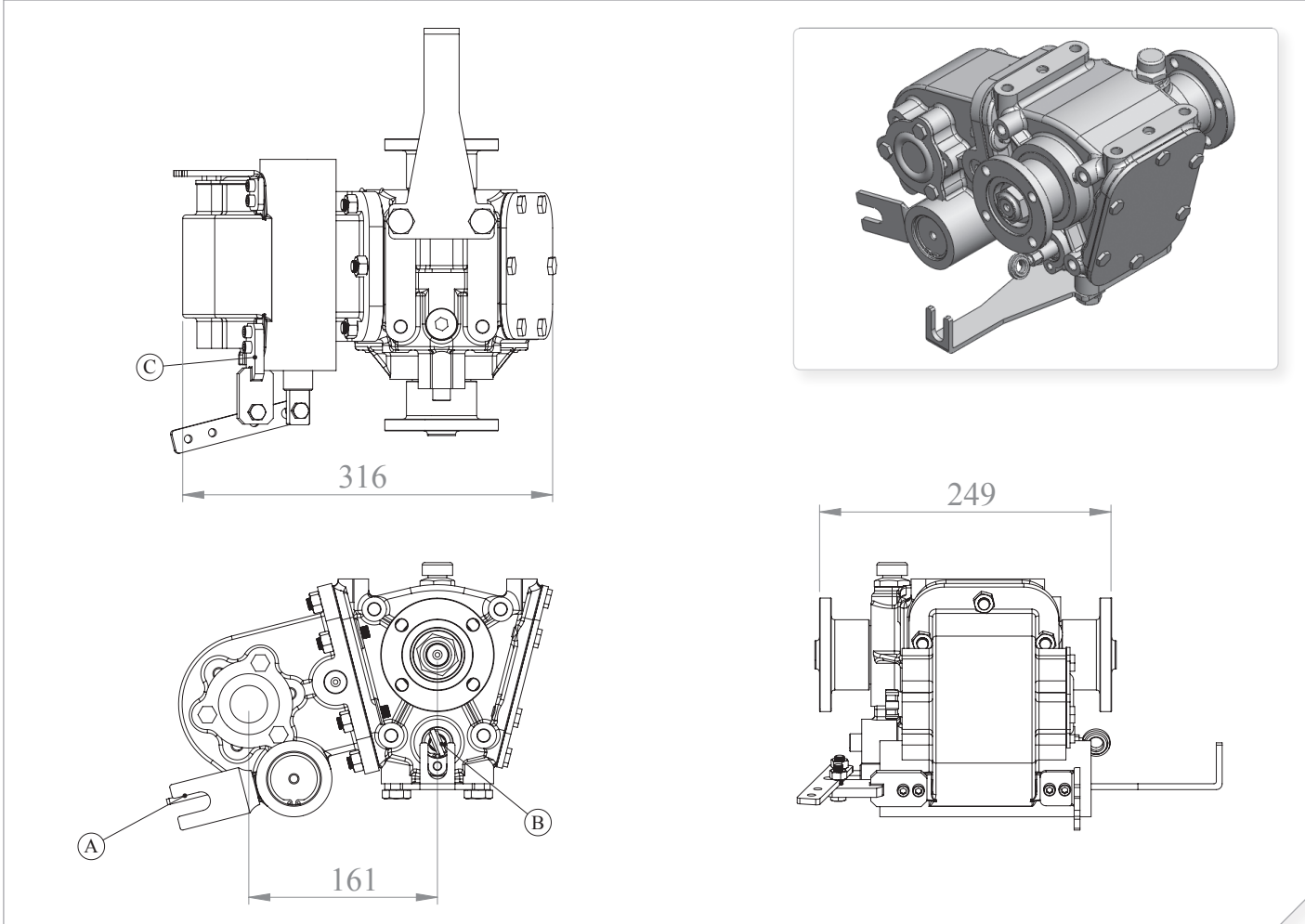


Vehicle Type	FORD TRANSIT-MERCEDES SPRINTER-VOLKSWAGEN-LIA BONGO-OPEL-FI AT-BMC
Gearbox Type	

Product Code
UARA.210.1



Products View



Options

	<p>A : PTO's Control (Mechanic/Pneumatic) B : Split Shaft Unit Control (Mechanic) C : DIN 5463 (6x21x25)</p>
--	---

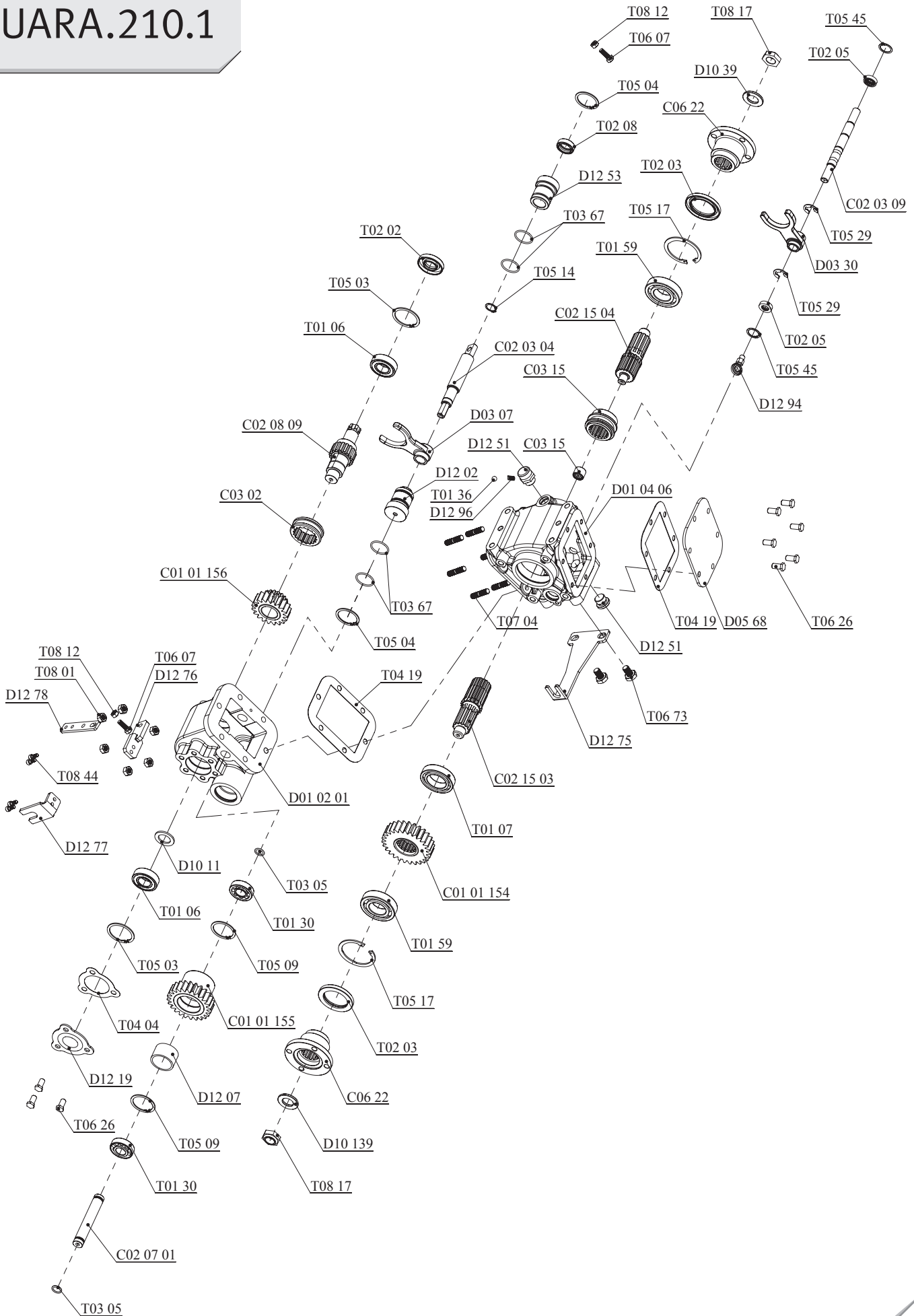
Technical Data

Power (Kw)	Maximum Torque (Kw)		Ratio	Mounting Side	Control Type
	Nm	Kgm			
1000 Dak.					
22	245	25X2	1/1.42	SHAFT	PNEUMATIC - MECHANIC
				Weight (Kg)	Rotation Sense
				36	COUNTERCLOCKWISE (CCW)



Biuro Handlowe:
TOP GEARS
 ul. Ekologiczna 8/15, 02-798 Warszawa
 Tel. +48 22 203 49 95
 email: biuro@topgears.pl
www.topgears.pl

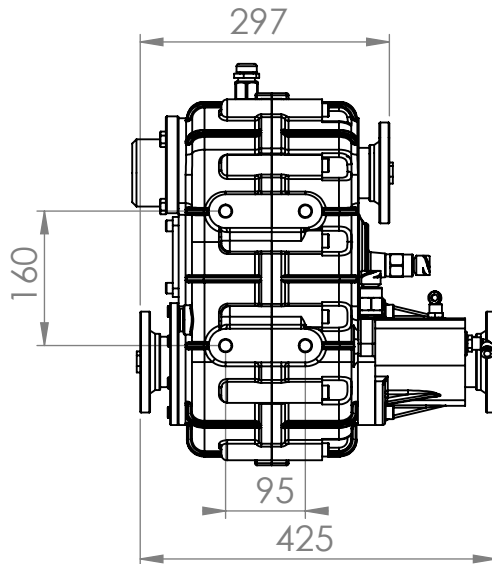
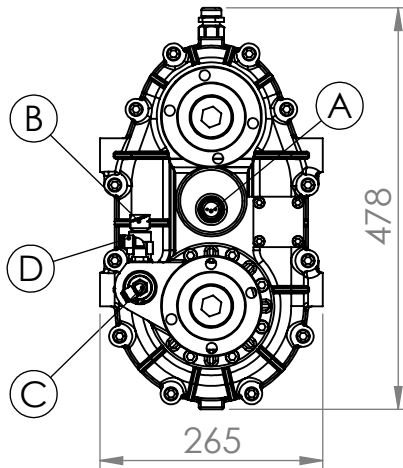
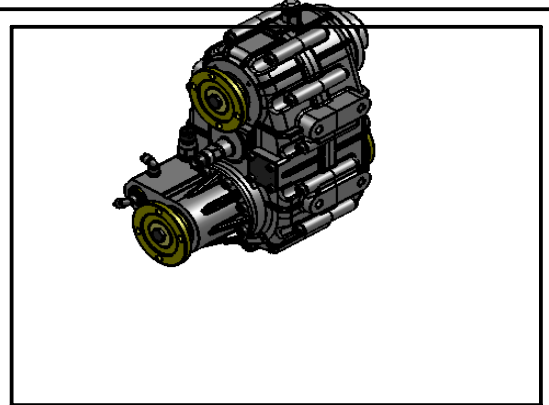
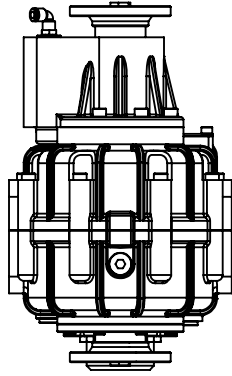
UARA.210.1



Vehicle Type:	3.5-5 TON HAFİF TİP 4X4 ARAÇ
Gearbox Type:	4X4 DİF. KİLİTLİ TEK DEVİRLİ ARA ŞANZİMAN

Product Code:	UARA.300

PRODUCTS VIEW



OPTIONS

- A : Electric Switch (Rpm Control)
- B : Electric Switch (For Lock to Dif.)
- C : Air Inlet (Engage)
- D : Air Inlet (Disengage)

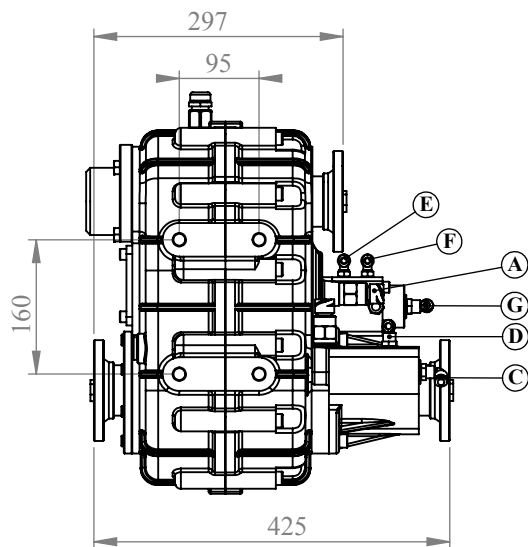
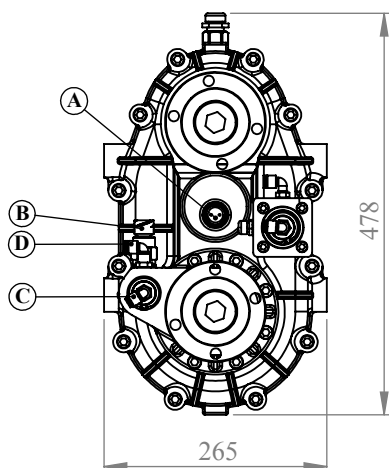
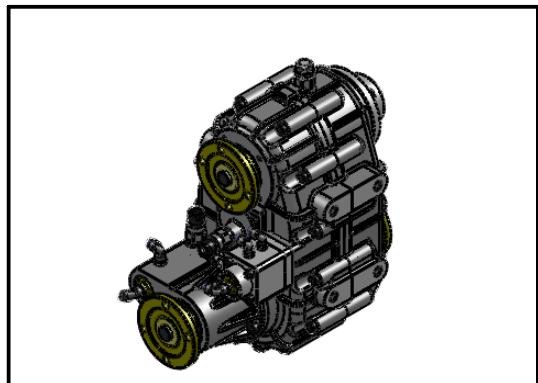
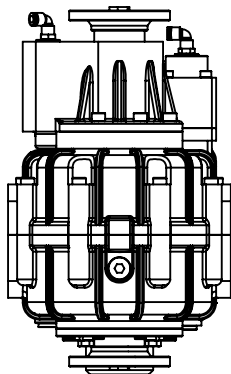
TECHNICAL DATA

(Power) 1000 Dak.	(Max. Torque) Nm Kgm		(Ratio)	Mounting Side	Control Type
178	1700	175	1/0.625	SHAFT	PNEUMATIC
				Weight	(Rotation Sense)
				64	COUNTERCLOCKWISE(CCW)

Vehicle Type:	3.5-5 TON HAFİF TİP 4X4 ARAÇ
Gearbox Type:	4X4 DİF. KİLİTLİ ÇİFT DEVİRLİ ARA ŞANZİMAN

Product Code:	UARA.301
---------------	-----------------

PRODUCTS VIEW



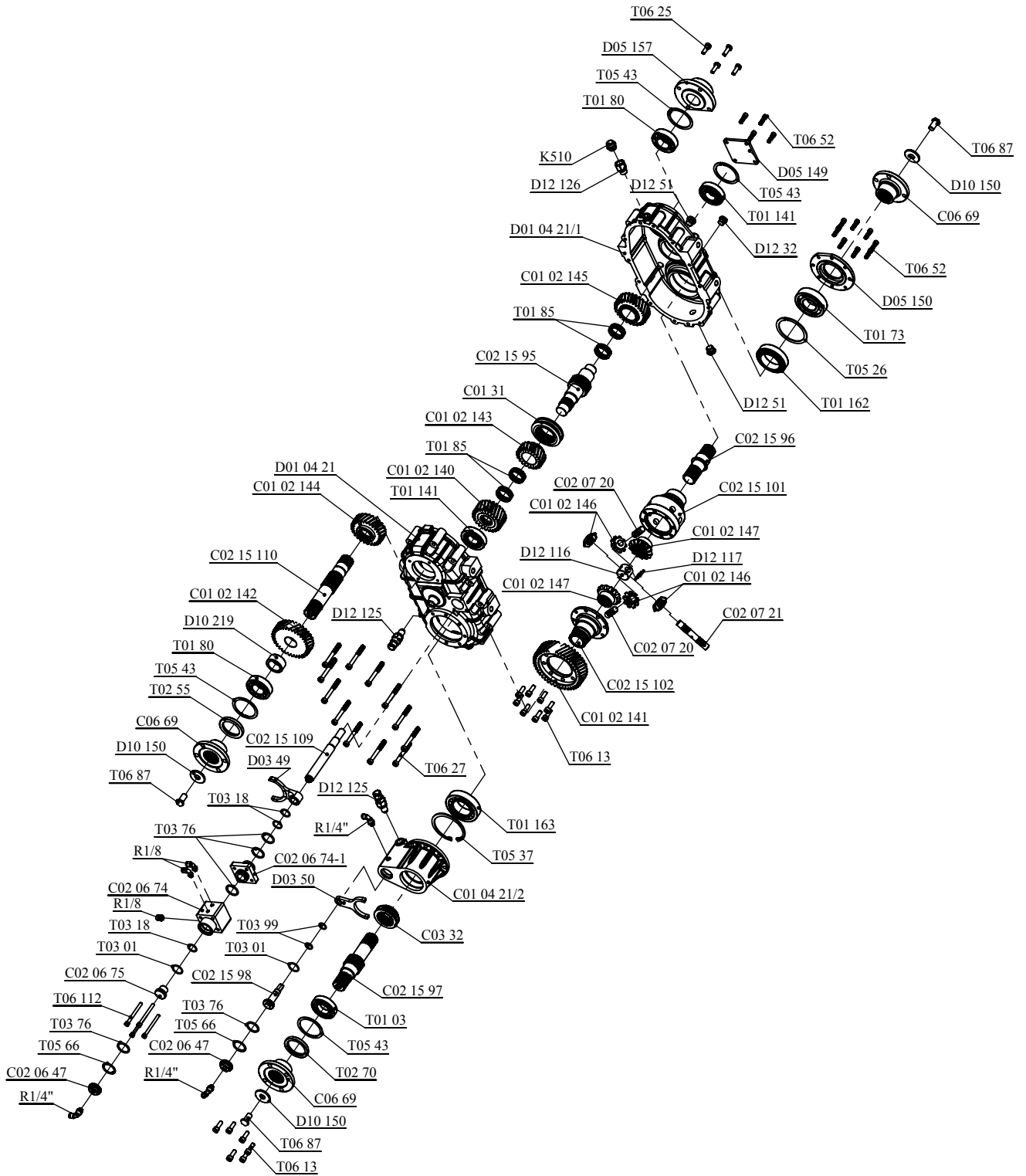
OPTIONS

- A : Electric Swith (Rpm Accounter)
- B : Electric Switch (Engage-Disengage)
- C : Air Inlet (PTO Differantial Lock Engage)
- D : Air Inlet (PTO Differantial Lock Disengage)
- E : Air Inlet (High Rpm Engage)
- F : Air Inlet (Low Rpm Engage)
- G : Air Inlet (Free Position)(With E At The Same Time)

TECHNICAL DATA

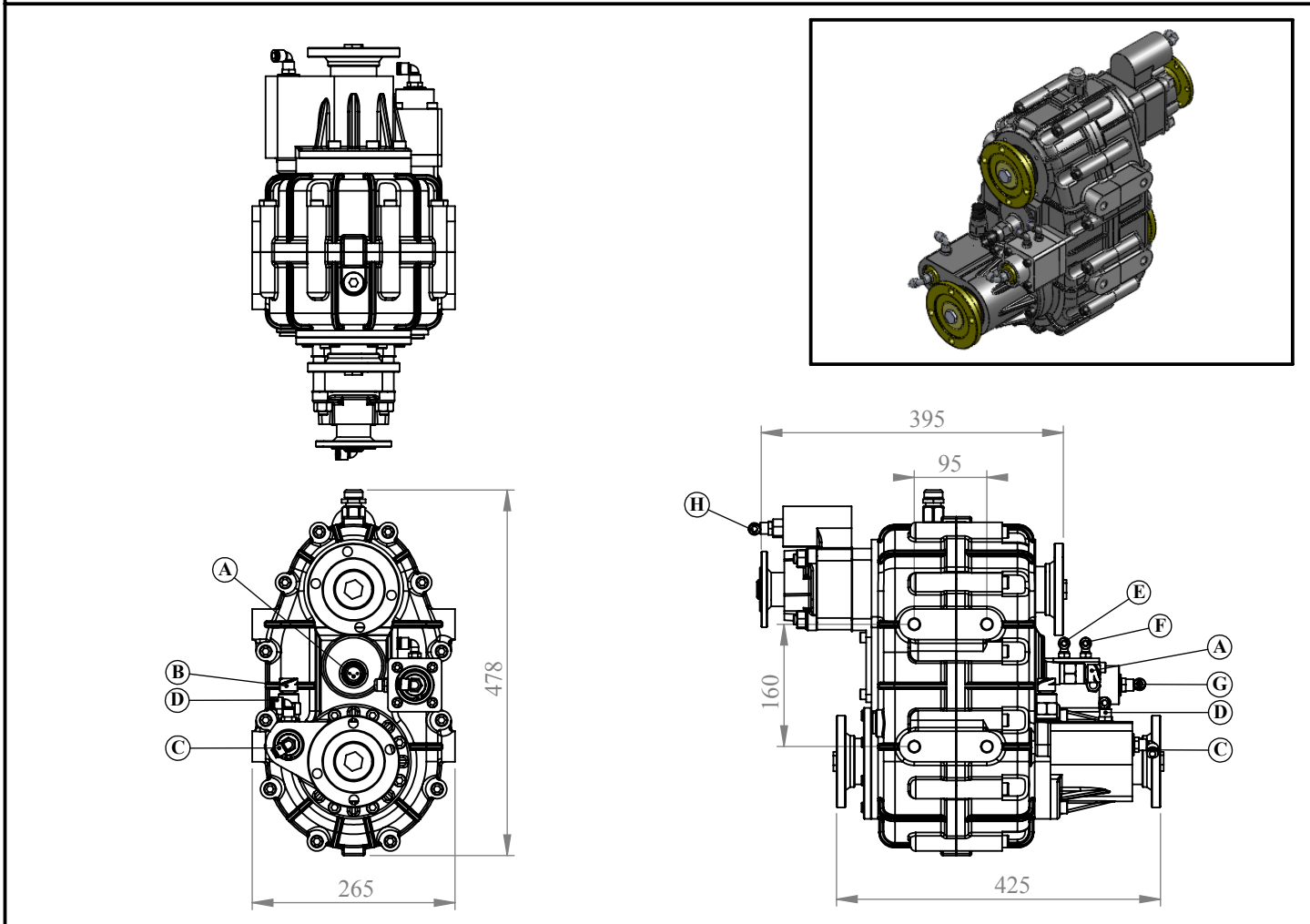
Power 1000 Dak.	Max. Torque Nm Kgm		Ratio	Mounting Side	Control Type
	178	1700		175	1/0.52
Weight - kg			Rotation Sense		
68			COUNTERCLOCKWISE(CCW)		

UARA.301



Vehicle Type:	3.5-5 TON HAFİF TİP 4X4 ARAÇ	Product Code:	UARA.302
Gearbox Type:	4X4 DİF. KİLİTLİ ÇİFT DEVİRLİ ARA ŞANZİMAN İTFAIYE İÇİN (3 KÖMÜMLÜ AĞIR-SERİ-BOŞ)		

PRODUCTS VIEW



OPTIONS

- A : Electric Switch (Rpm Accounter)
- B : Electric Switch (Engage-Disengage)
- C : Air Inlet (PTO Differential Lock Engage)
- D : Air Inlet (PTO Differential Lock Disengage)
- E : Air Inlet (High Rpm Engage)
- F : Air Inlet (Low Rpm Engage)
- G : Air Inlet (Free Position)(With E At The Same Time)
- H : Air Inlet (Pump Output-Engaged)

TECHNICAL DATA

Power 1000 Dak.	Max. Torque Nm / Kgm		Ratio	Mounting Side	Control Type
	178	1700		175	SHAFT
Weight - kg			Rotation Sense		
68			COUNTERCLOCKWISE(CCW)		

Biuro Handlowe:

TOP GEARS

ul. Ekologiczna 8/15, 02-798 Warszawa

Tel. +48 22 203 49 95

email: biuro@topgears.pl

www.topgears.pl



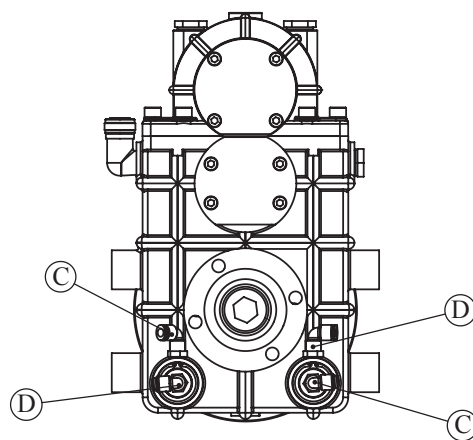
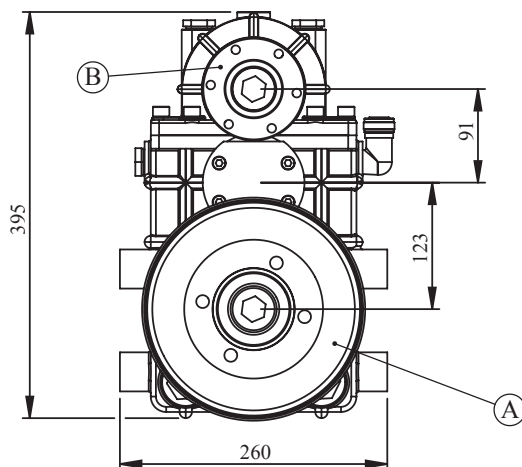
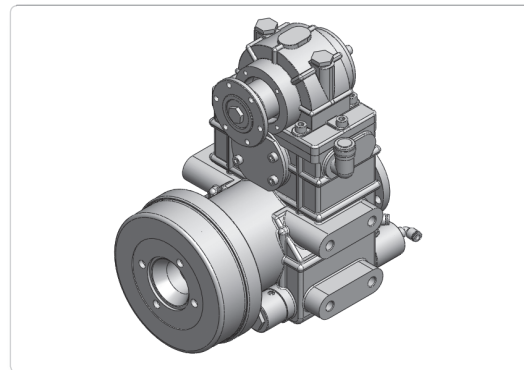
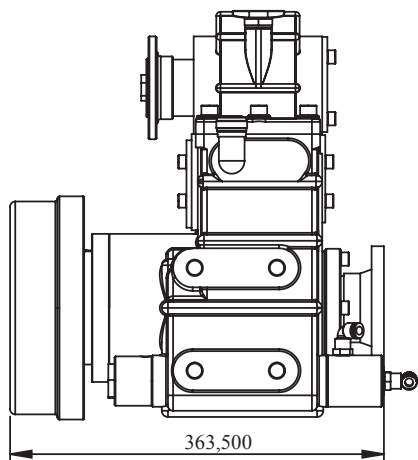
Typ pojazdu Vehicle Type	FOR FIRE FIGHTING VEHICLES-FOR ROAD SERVICE VEHICLES
Skrzynia biegów Gearbox Type	

Kod Produktu/Product Code

UARA.400



Widok / Products View



Opcje / Options

- A:** Hand Brake System (Mitsubishi-Hyundai-Isuzu-Hino)
- B:** Flange DIN 100
- C:** Air Inlet (Engage)
- D:** Air Outlet (Disengage)

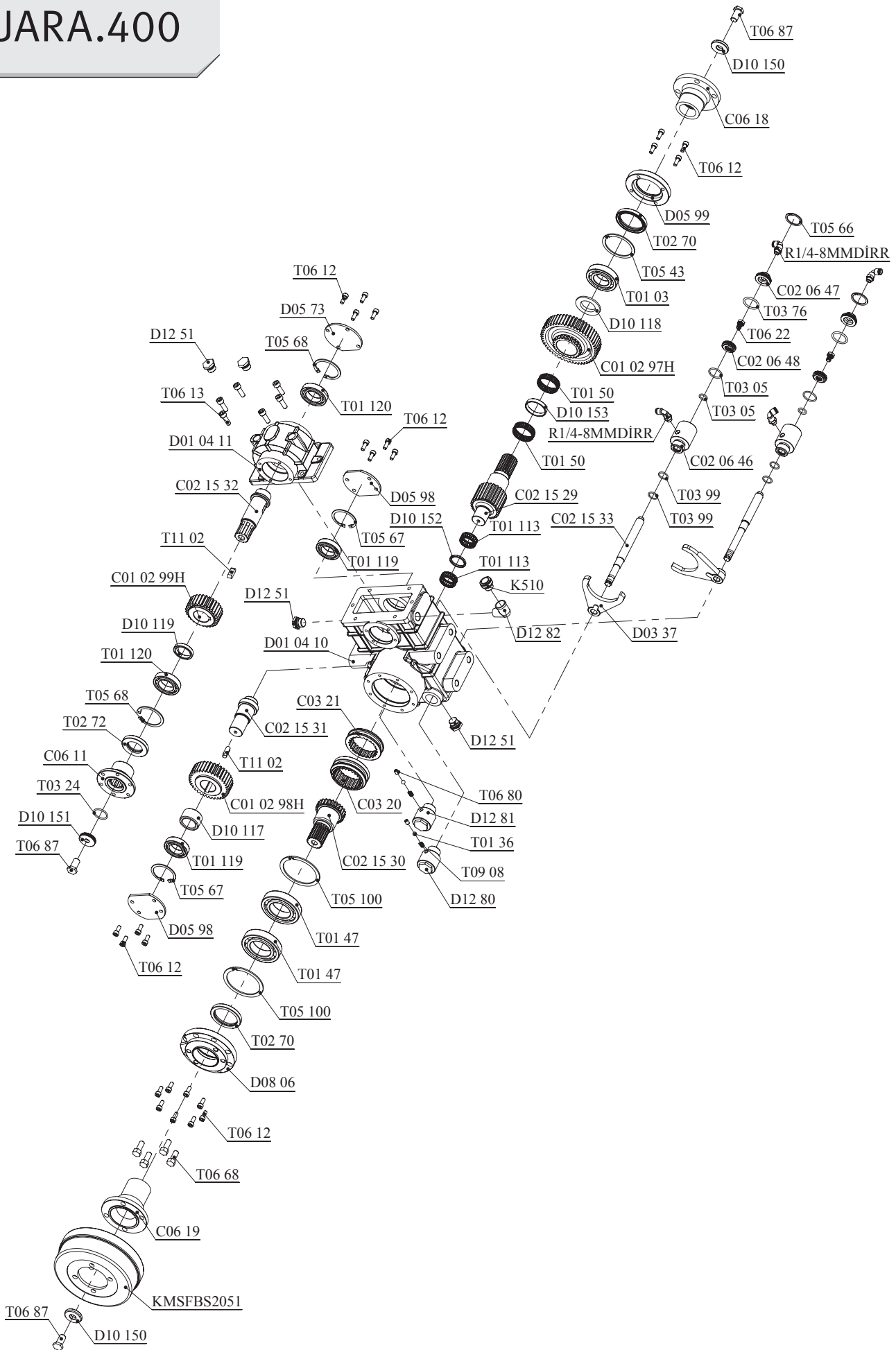
Technical Data

Power (Kw)	Maximum Torque (Kw)		Ratio	Mounting Side	Control Type
	Nm	Kgm			
1000 Dak.					
82	785	80	1/1.8	SHAFT	PNEUMATIC - MECHANIC
				Weight (Kg)	Rotation Sense
				60	COUNTERCLOCKWISE (CCW)



Biuro Handlowe:
TOP GEARS
 ul. Ekologiczna 8/15, 02-798 Warszawa
 Tel. +48 22 203 49 95
 email: biuro@topgears.pl
www.topgears.pl

UARA.400

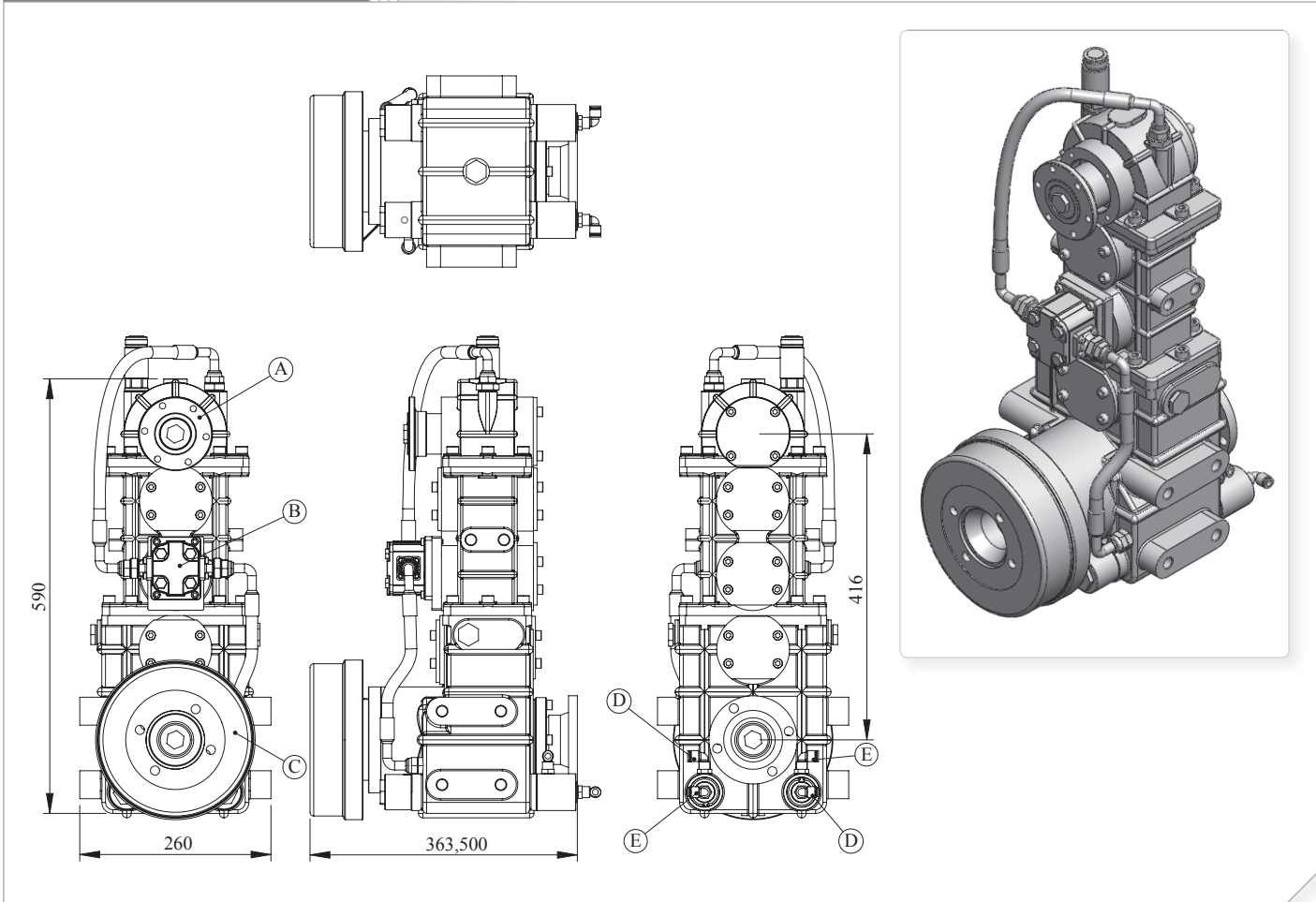


Vehicle Type	FOR FIRE FIGHTING VEHICLES-FOR ROAD SERVICE VEHICLES
Gearbox Type	

Product Code
UARA.401



Products View



Options

- A : Flange, DIN 100 and DIN 120
- B : Group 2 Pump
- C : Hand Brake System (Mitsubishi-Hyundai-Isuzu-Hino)
- D : Air Inlet R1/4" (Engage)
- E : Air Inlet R1/4" (Disengage)

Technical Data

Power (Kw)	Maximum Torque (Kw)		Ratio	Mounting Side	Control Type
	Nm	Kgm			
1000 Dak.					
82	785	80	1/1.8	SHAFT	PNEUMATIC
				Weight (Kg)	Rotation Sense
				85	COUNTERCLOCKWISE (CCW)



Biuro Handlowe:
TOP GEARS
ul. Ekologiczna 8/15, 02-798 Warszawa
Tel. +48 22 203 49 95
email: biuro@topgears.pl
www.topgears.pl

UARA.401

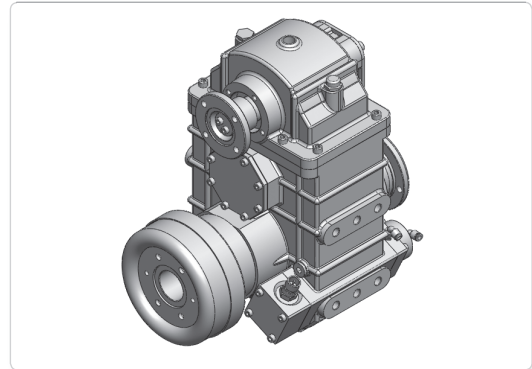
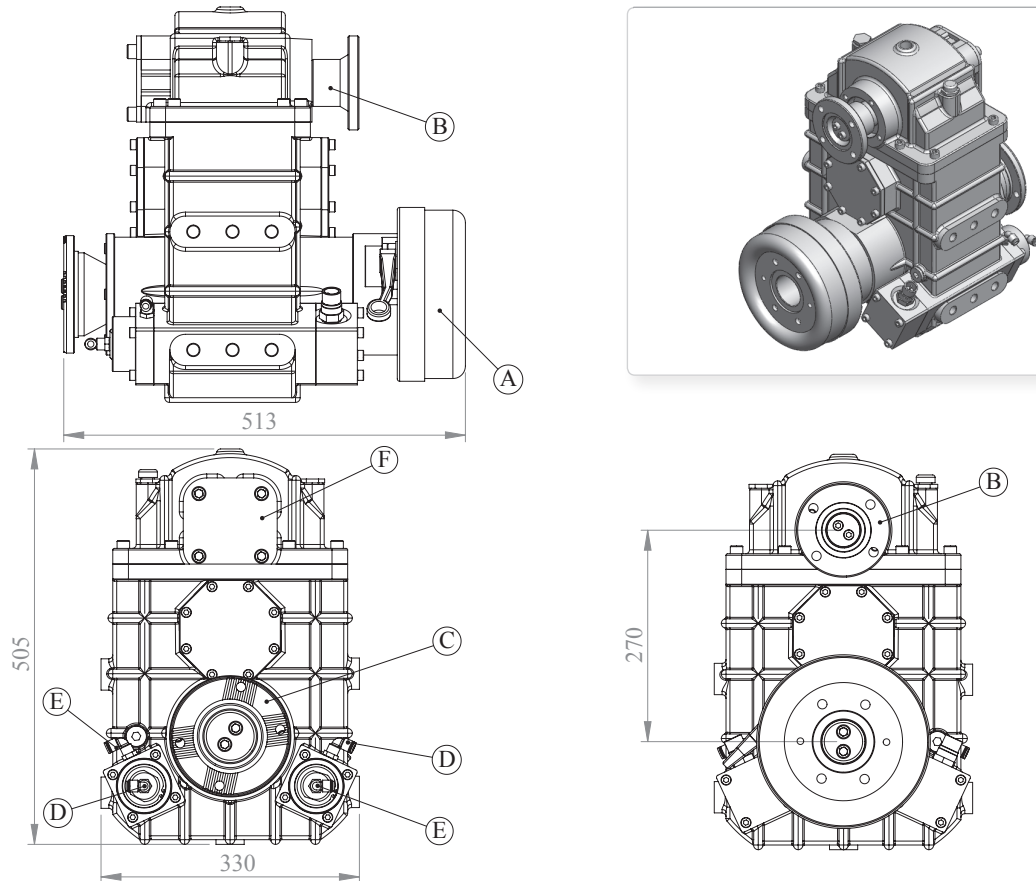


Vehicle Type	FOR FIRE FIGHTING VEHICLES - FOR ROAD SERVICE VEHICLES
Gearbox Type	

Product Code
UARA.801



Products View



Options

- A : Hand Brake System (Isuzu-Mitsubishi-Hino-Hyundai)
- B : DIN 100 (6 Holes) - DIN 120 (4 Holes)
- C : DIN 150 (Cross Hatch)-DIN 180 (Cross Hatch)-DIN 180
- D : Air Inlet (Engage)
- E : Air Inlet (Disengage)
- F : Second Output (Options)

Technical Data

Power (Kw)		Maximum Torque (Kw)		Ratio	Mounting Side	Control Type
1000 Dak.		Nm	Kgm			
UARA.801.1/1.84	135	1275	130	1/1.84	SHAFT	PNEUMATIC
UARA.801.1/2.25	113	1080	110	1/2.25	Weight (Kg)	Rotation Sense
					128	COUNTERCLOCKWISE (CCW)



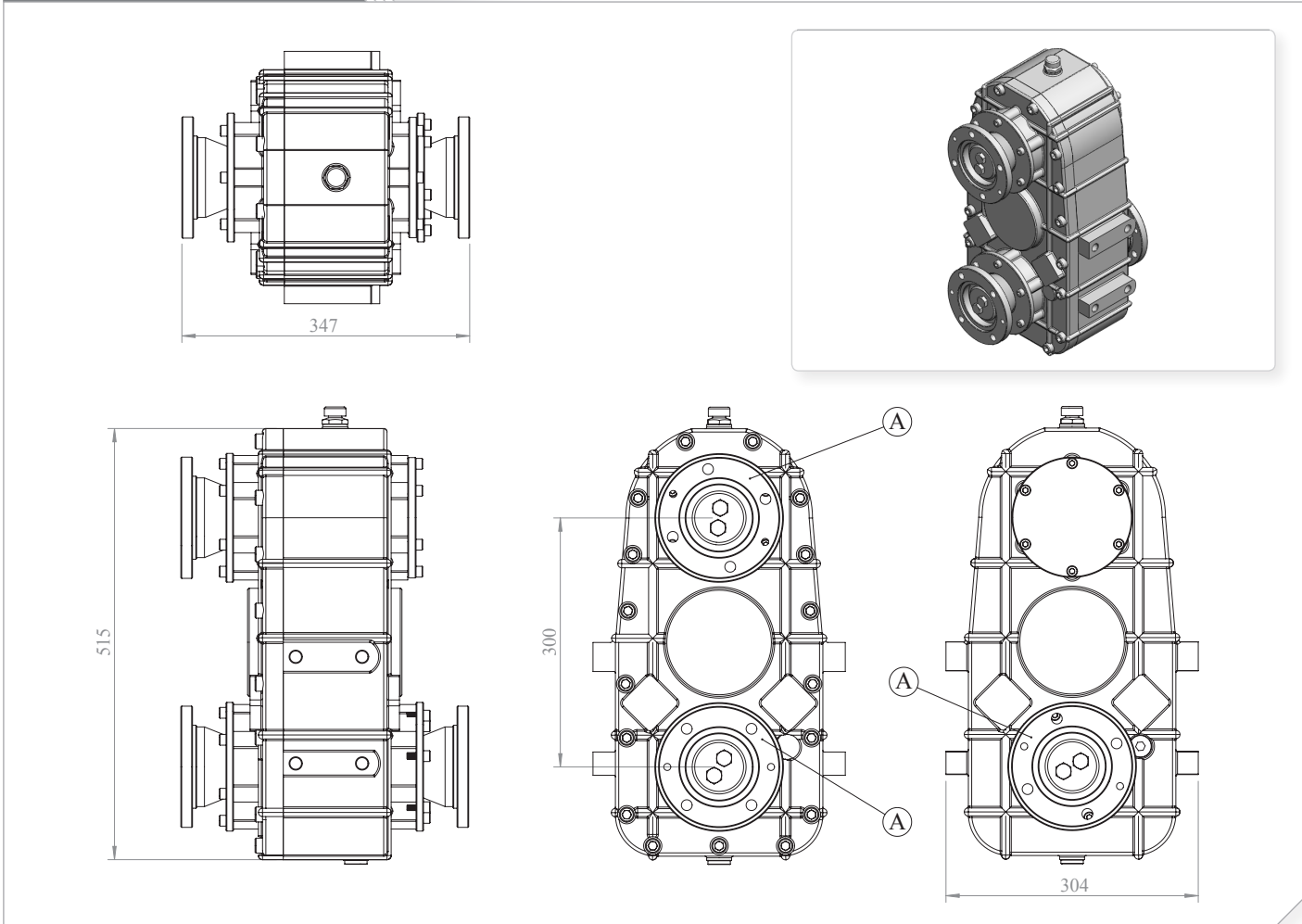
Biuro Handlowe:
TOP GEARS
ul. Ekologiczna 8/15, 02-798 Warszawa
Tel. +48 22 203 49 95
email: biuro@topgears.pl
www.topgears.pl

Vehicle Type	From 4x2 to 4x4
Gearbox Type	

Product Code
UARA.803



Products View



Options

A : Flange DIN 120 - DIN 150 - DIN 180

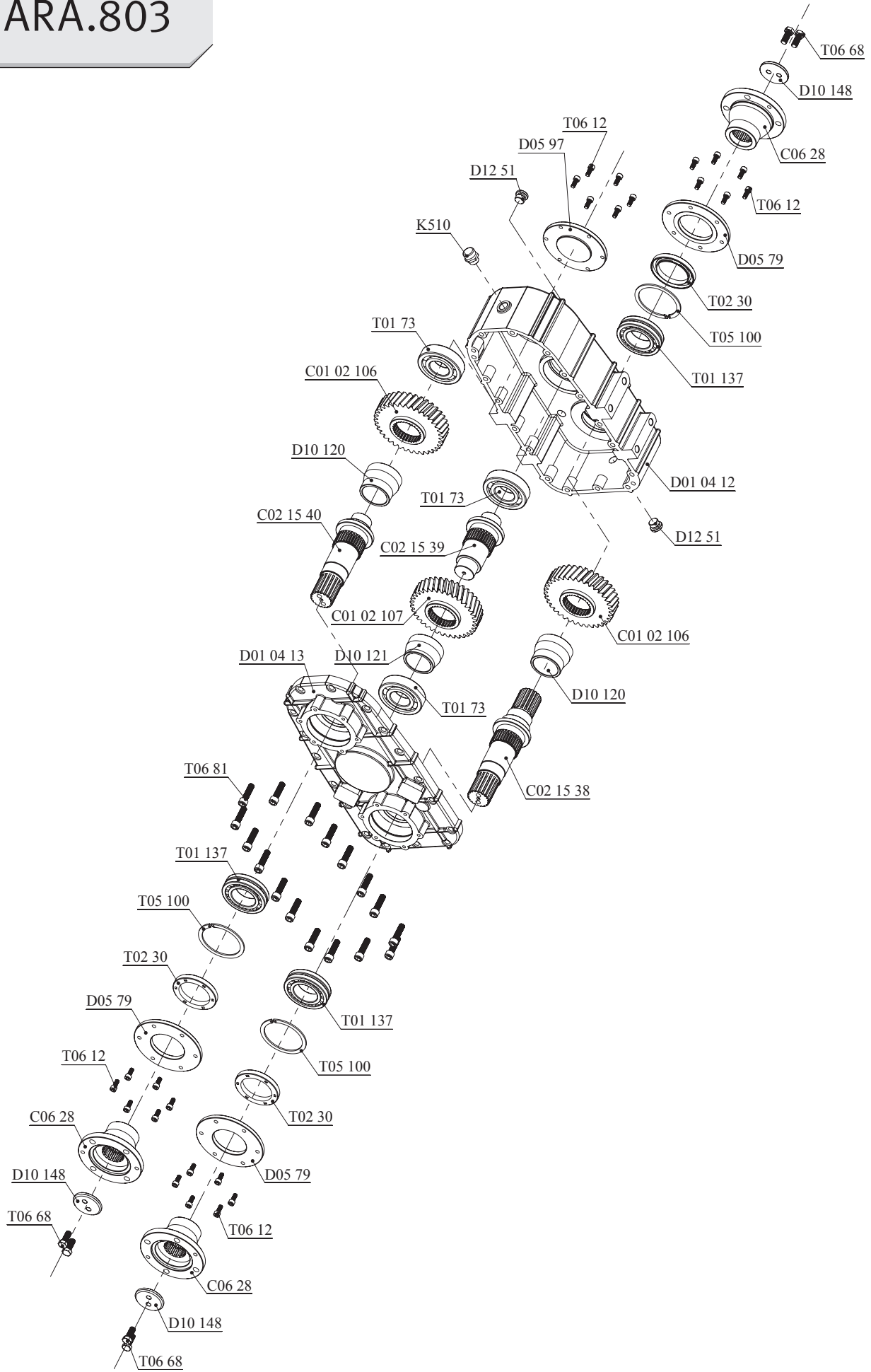
Technical Data

Power (Kw)	Maximum Torque (Kw)		Ratio	Mounting Side	Control Type
	Nm	Kgm			
1000 Dak.					
135	1275	130	1/1	SHAFT	DIRECT
				Weight (Kg)	Rotation Sense
				92	COUNTERCLOCKWISE (CCW)



Biuro Handlowe:
TOP GEARS
ul. Ekologiczna 8/15, 02-798 Warszawa
Tel. +48 22 203 49 95
email: biuro@topgears.pl
www.topgears.pl

UARA.803

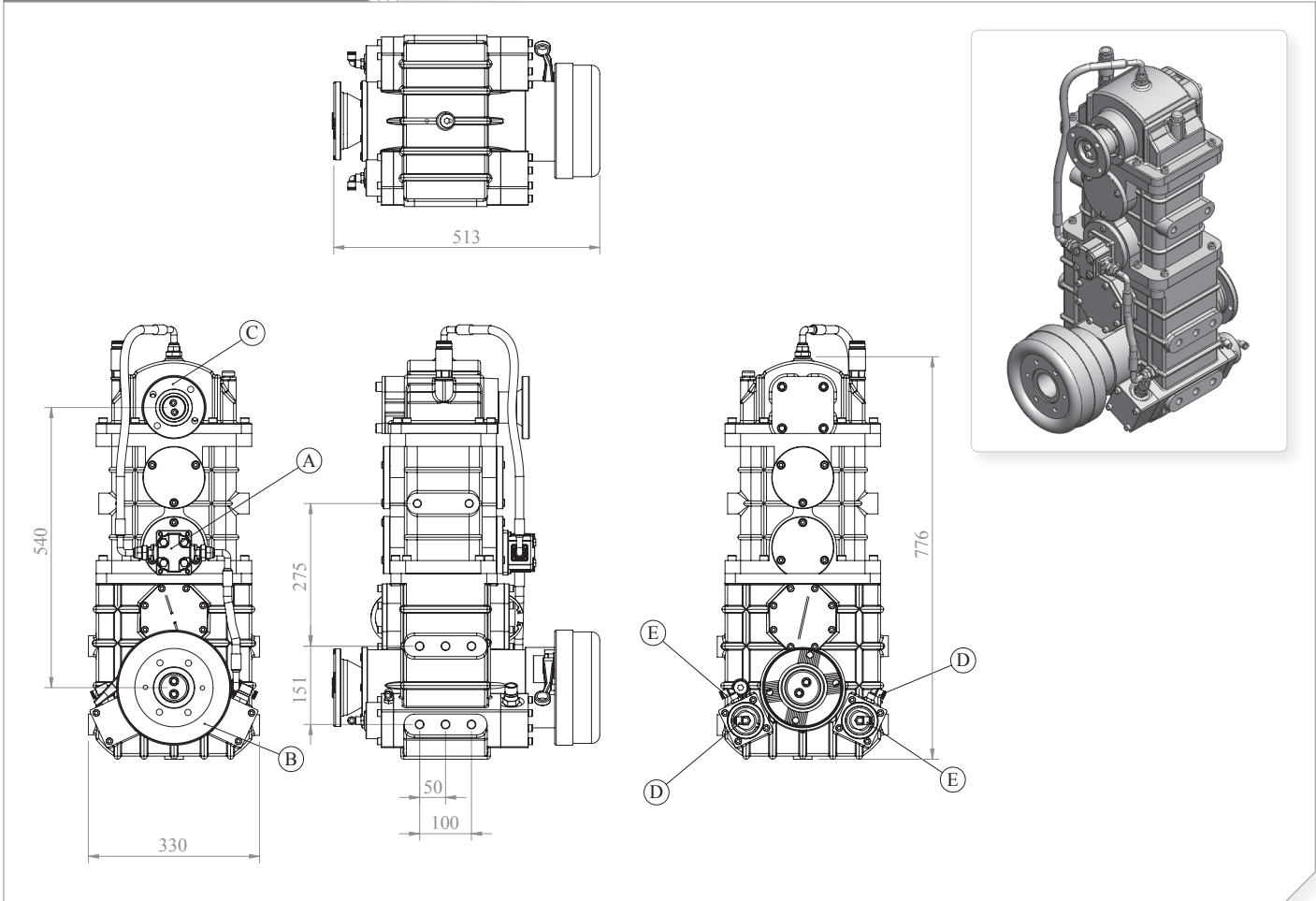


Vehicle Type	FOR FIRE FIGHTING VEHICLES-FOR ROAD SERVICE VEHICLES
Gearbox Type	

Product Code
UARA.805



Products View



Options

- A : Gear Pump
- B : Hand Brake System (Mitsubishi-Hyundai-Isuzu-Hino)
- C : Flange, DIN 100 and DIN 120
- D : Air Inlet R1/4" (Engage)
- E : Air Inlet R1/4" (Disengage)

Technical Data

Power (Kw)	Maximum Torque (Kw)		Ratio	Mounting Side	Control Type
	Nm	Kgm			
1000 Dak.					
135	1275	130	1/1.84	SHAFT	PNEUMATIC
				Weight (Kg)	Rotation Sense
				200	COUNTERCLOCKWISE (CCW)



Biuro Handlowe:
TOP GEARS
ul. Ekologiczna 8/15, 02-798 Warszawa
Tel. +48 22 203 49 95
email: biuro@topgears.pl
www.topgears.pl

UARA.805

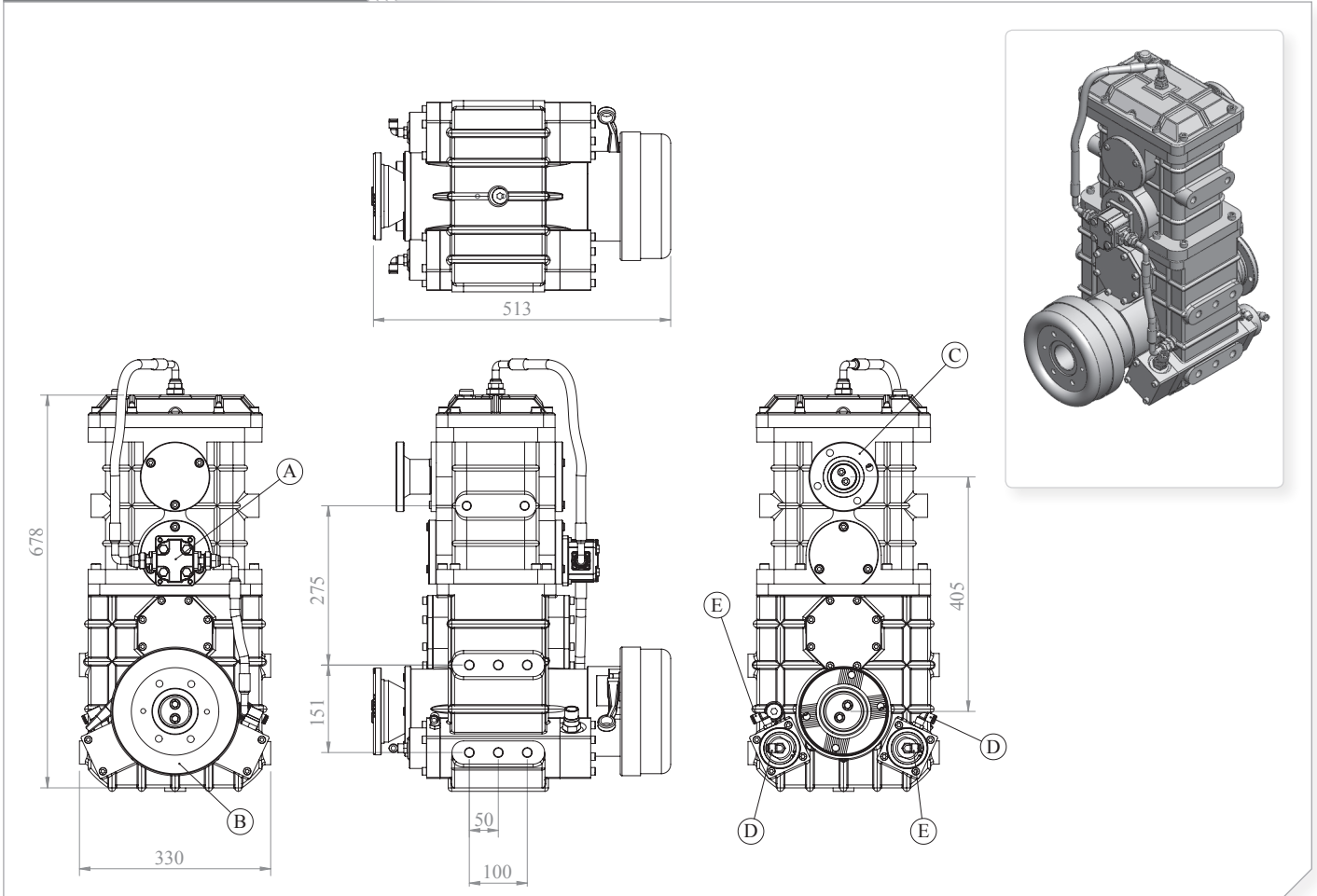


Vehicle Type	FOR FIRE FIGHTING VEHICLES-FOR ROAD SERVICE VEHICLES
Gearbox Type	

Product Code
UARA.806



Products View



Options

- A : Gear Pump
- B : Hand Brake System (Mitsubishi-Hyundai-Isuzu-Hino)
- C : Flange, DIN 100 and DIN 120
- D : Air Inlet R1/4" (Engage)
- E : Air Inlet R1/4" (Disengage)

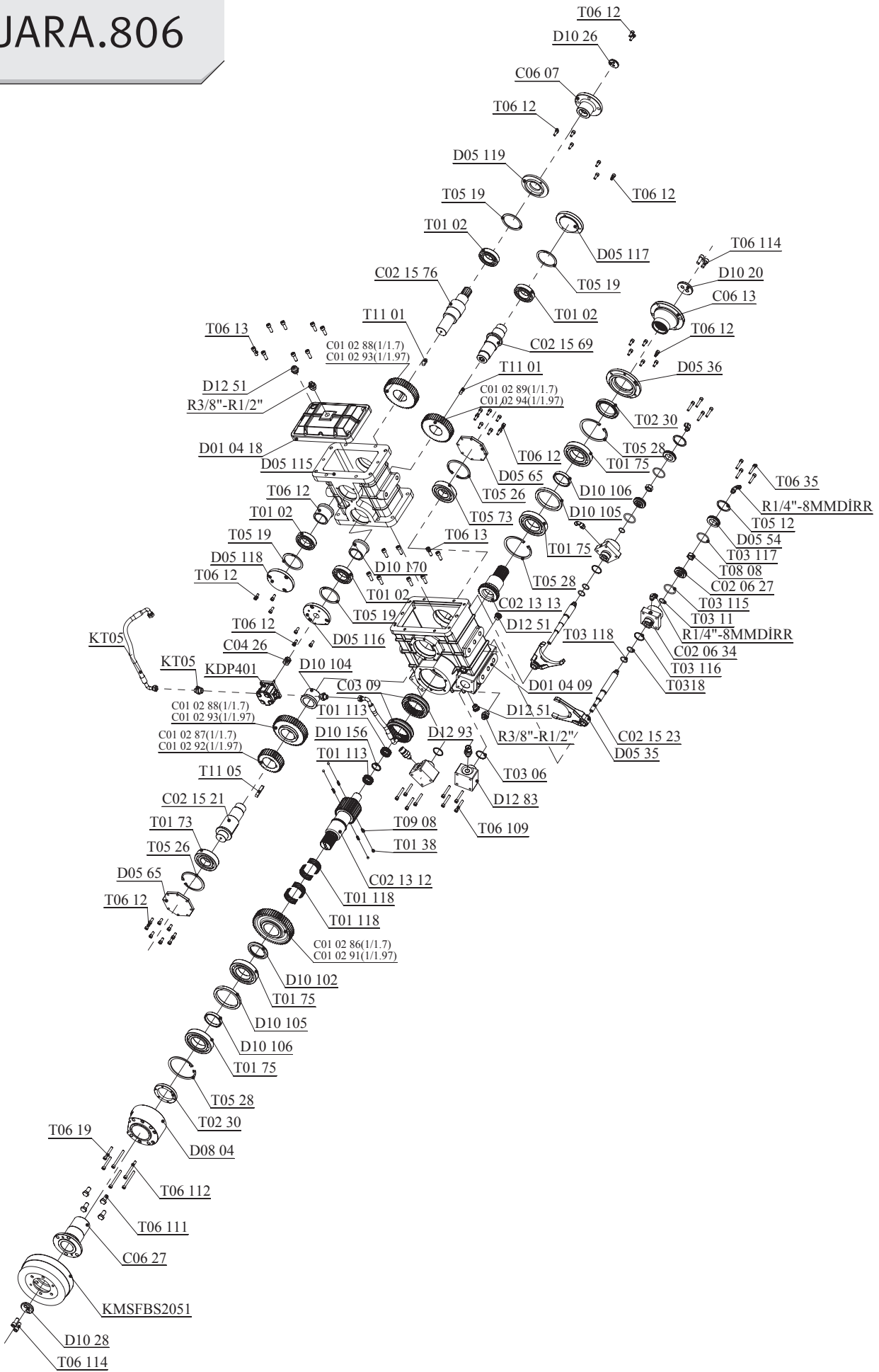
Technical Data

Power (Kw)	Maximum Torque (Kw)		Ratio	Mounting Side	Control Type
	Nm	Kgm			
1000 Dak.					
135	1275	130	1/1.7	SHAFT	PNEUMATIC
				Weigh	Rotation Sense
				176	COUNTERCLOCKWISE (CCW)



Biuro Handlowe:
TOP GEARS
ul. Ekologiczna 8/15, 02-798 Warszawa
Tel. +48 22 203 49 95
email: biuro@topgears.pl
www.topgears.pl

UARA.806

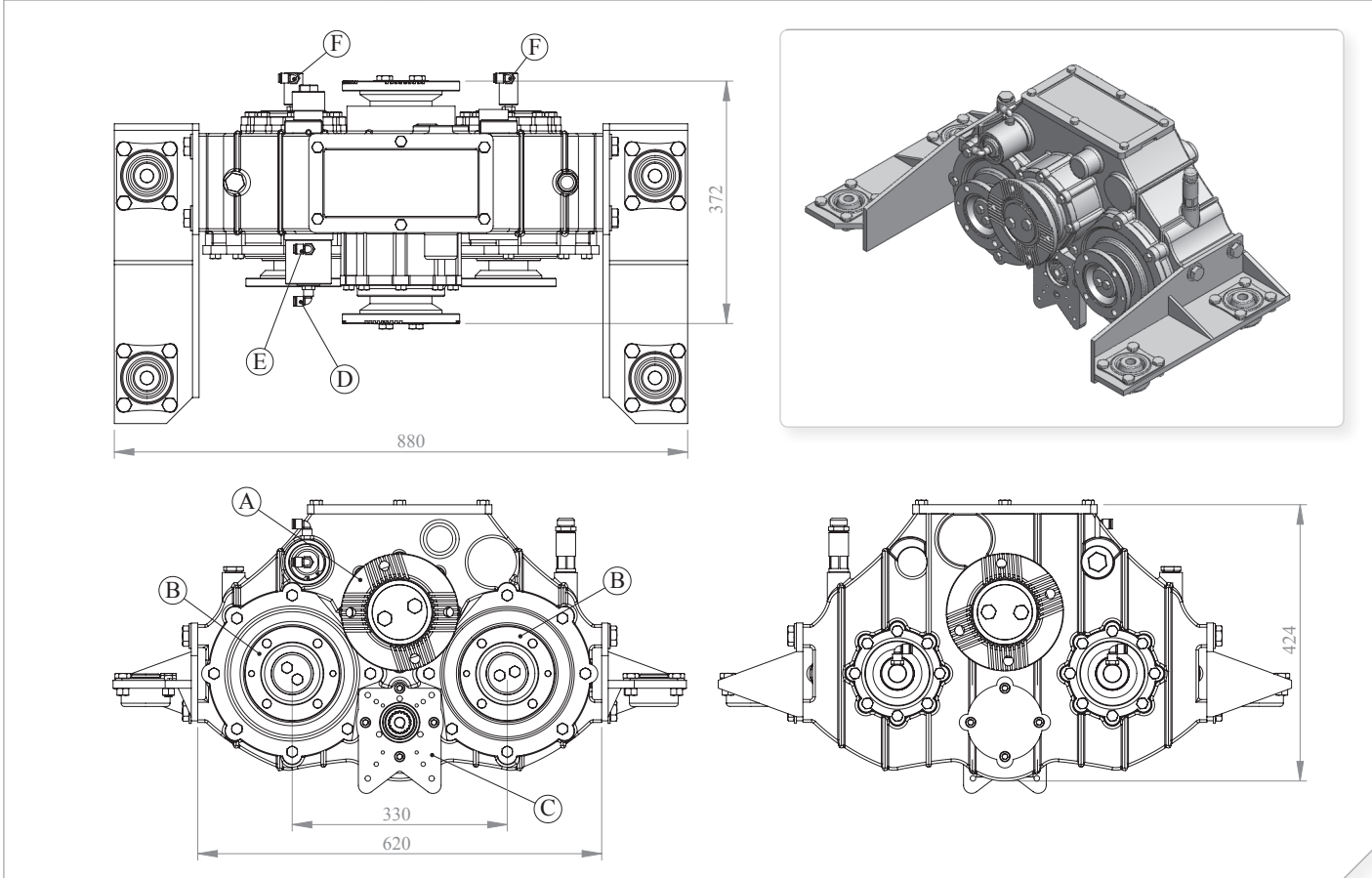


Vehicle Type	USAGE FOR CESSPIT EMTIERS, FOR CLEANING COMBINATION MACHINES
Gearbox Type	

Product Code
UARA.2400



Products View



Options

- A:** DIN 150(4 H. Cross Hatching), DIN180(4 H. Cross Hatching), DIN180(8 H)
- B:** DIN140 (4 Holes)
- C:** Pump Output: 1P1, 2P1, Gear Pump
- D:** Air Inlet R1/4" (Rear Axle Output Engage)
- E:** Air Inlet R1/4" (Rear Axle Output Disengage)
- F:** Air Inlet R1/4" (Outputs Engage)

Technical Data

Power (Kw)	Maximum Torque (Kw)		Ratio	Mounting Side	Control Type
	Nm	Kgm			
1000 Dak.					
115	1080	110	1/1.25	SHAFT	PNEUMATIC
				Weight (Kg)	Rotation Sense
				195	CLOCKWISE (CW)

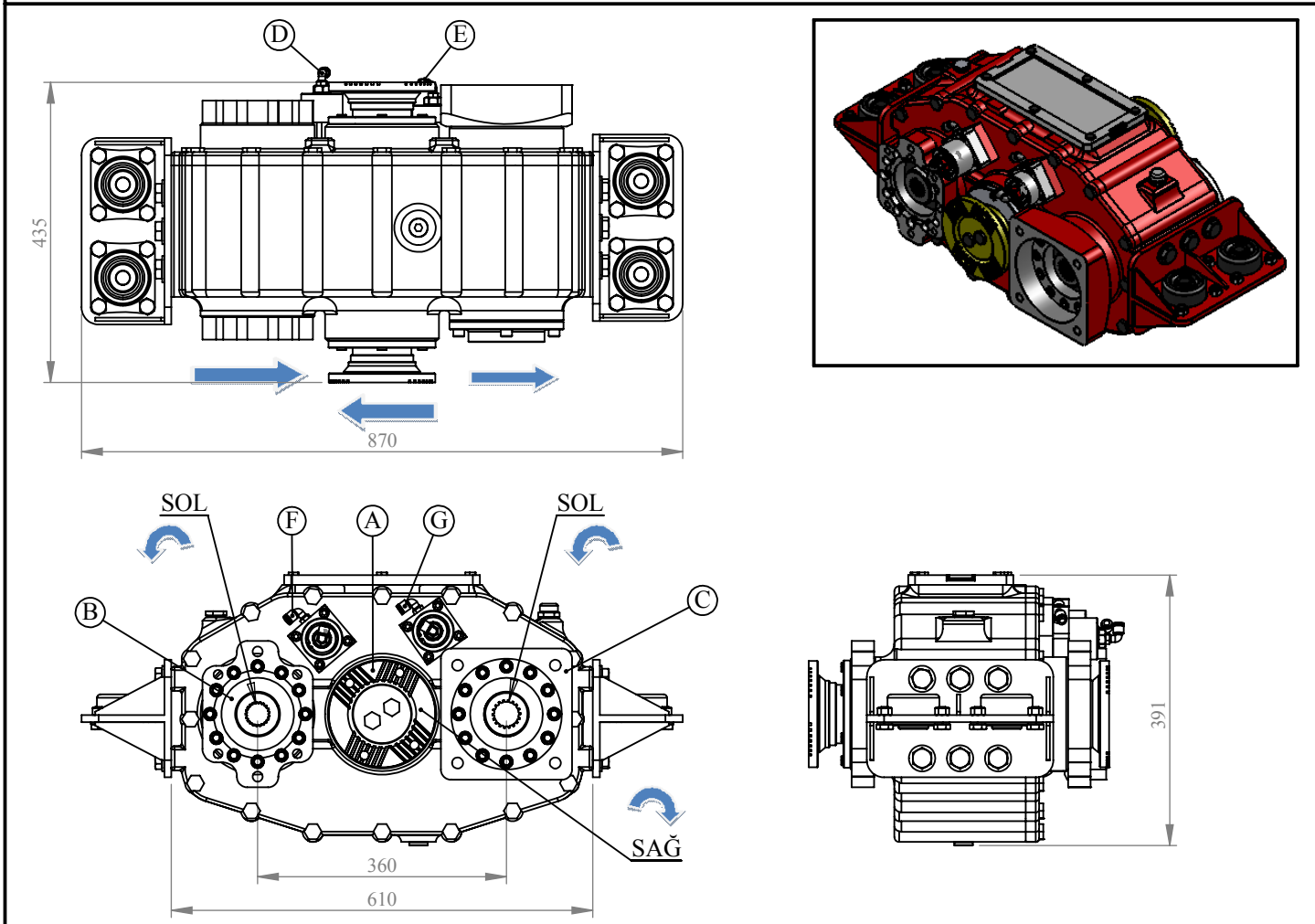


Biuro Handlowe:
TOP GEARS
ul. Ekologiczna 8/15, 02-798 Warszawa
Tel. +48 22 203 49 95
email: biuro@topgears.pl
www.topgears.pl

Vehicle Type:	SEWAGE AND ROAD MAINTAINS TRUCKS
Gearbox Type:	

Product Code:	UARA.2500
---------------	------------------

PRODUCTS VIEW



OPTIONS

- A : DIN 150 (4 H. CROSS HATCHING) FLANGE
- B : SH6V 75 PUMP PLATE
- C : H1C 108ME HYDROMOTOR PLATE
- D : AIR INLET (HYDROLIC PUMP DISENGAGE)
- E : AIR INLET (HYDROMOTOR DISENGAGE)
- F : AIR INLET (HYDROLIC PUMP ENGAGE)
- G : AIR INLET (HYDROMOTOR ENGAGE)

TECHNICAL DATA

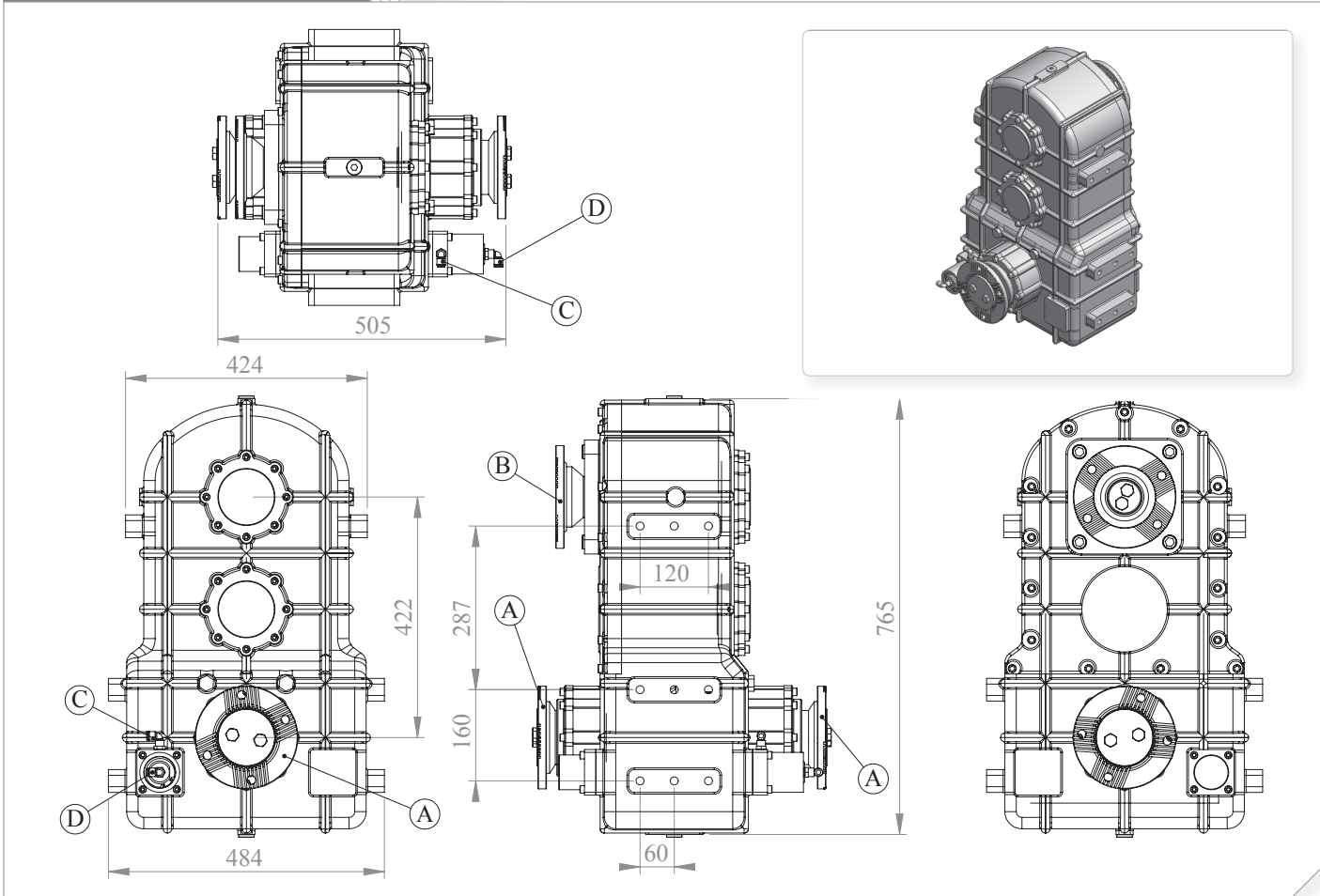
(Power) 1000 Dak.	(Max. Torque) Nm / Kgm		Ratio	Mounting Side	Control Type
150	1432.5	146	GİRİŞ:1/1.3 GİRİŞ:1/1.75 ÇIKIŞ:1/4.5	SHAFT	PNEUMATIC
				Weight	Rotation Sense
				200	CLOCKWISE (CW)

Vehicle Type	USAGE FOR CESSPIT EMTIERS, FOR HIGH FLOW AND HIGH PRESSURE CLEANIN G COMBINATION MACHINES
Gearbox Type	

Product Code
UARA.3000



Products View



Options

<p>A : DIN 150(4 H. Cross Hatching),DIN180(4 H. Cross Hatching),DIN180(8 H)B :</p> <p>B : DIN150 (4 Holes Cross Hatching), DIN180 (4 Holes Cross Hatching)</p> <p>C : Air Inlet R1/4" (Engage)</p> <p>D : Air Inlet R1/4" (Disengage)</p>

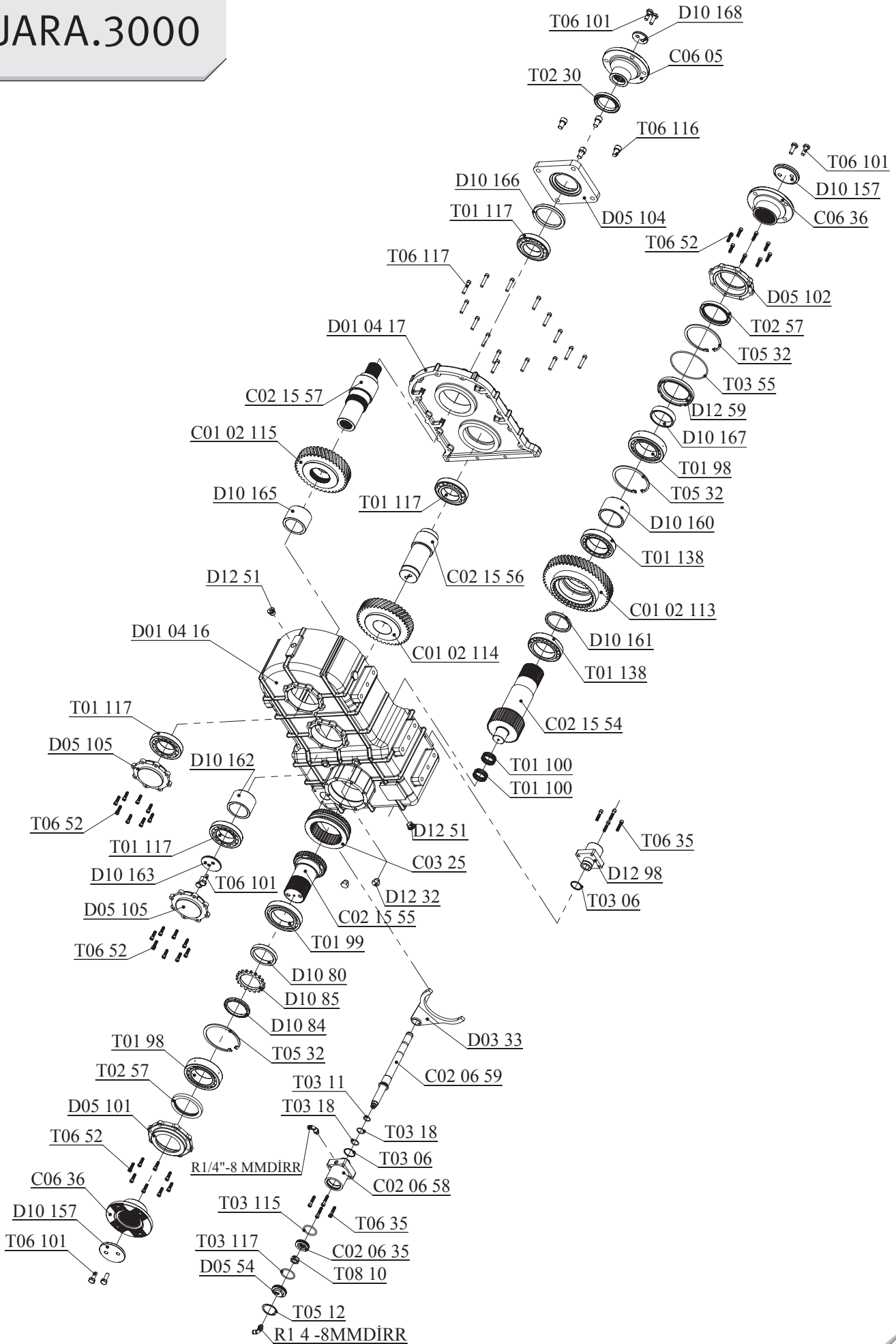
Technical Data

Power (Kw)	Maximum Torque (Kw)		Ratio	Mounting Side	Control Type
	Nm	Kgm			
100Dak.				SHAFT	PNEUMATIC
210	1960	200	1/1.3	Weight (Kg)	Rotation Sense
				250	COUNTERCLOCKWISE (CCW)



Biuro Handlowe:
TOP GEARS
ul. Ekologiczna 8/15, 02-798 Warszawa
Tel. +48 22 203 49 95
email: biuro@topgears.pl
www.topgears.pl

UARA.3000

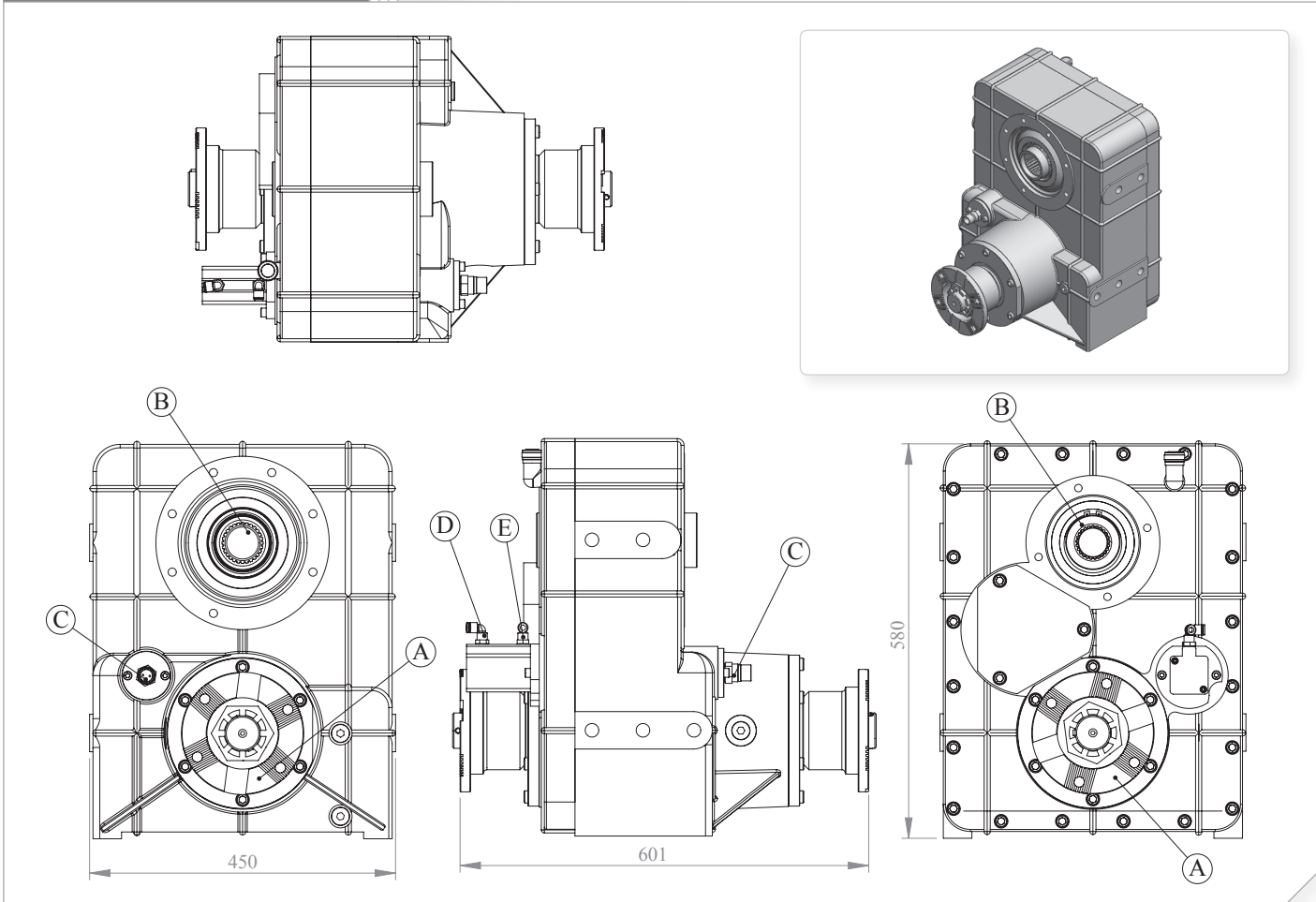


Vehicle Type	FOR CONCRETE PUMP VEHICLES
Gearbox Type	

Product Code
UARA.3001



Products View



Options

<p>A: Flange DIN 180 (4 Holes, Cross Hatching) B: Outputs C: Passing Contact Switch D: Air Inlet R1/4" (Engage) E: Air Inlet R1/4" (Disengage)</p>

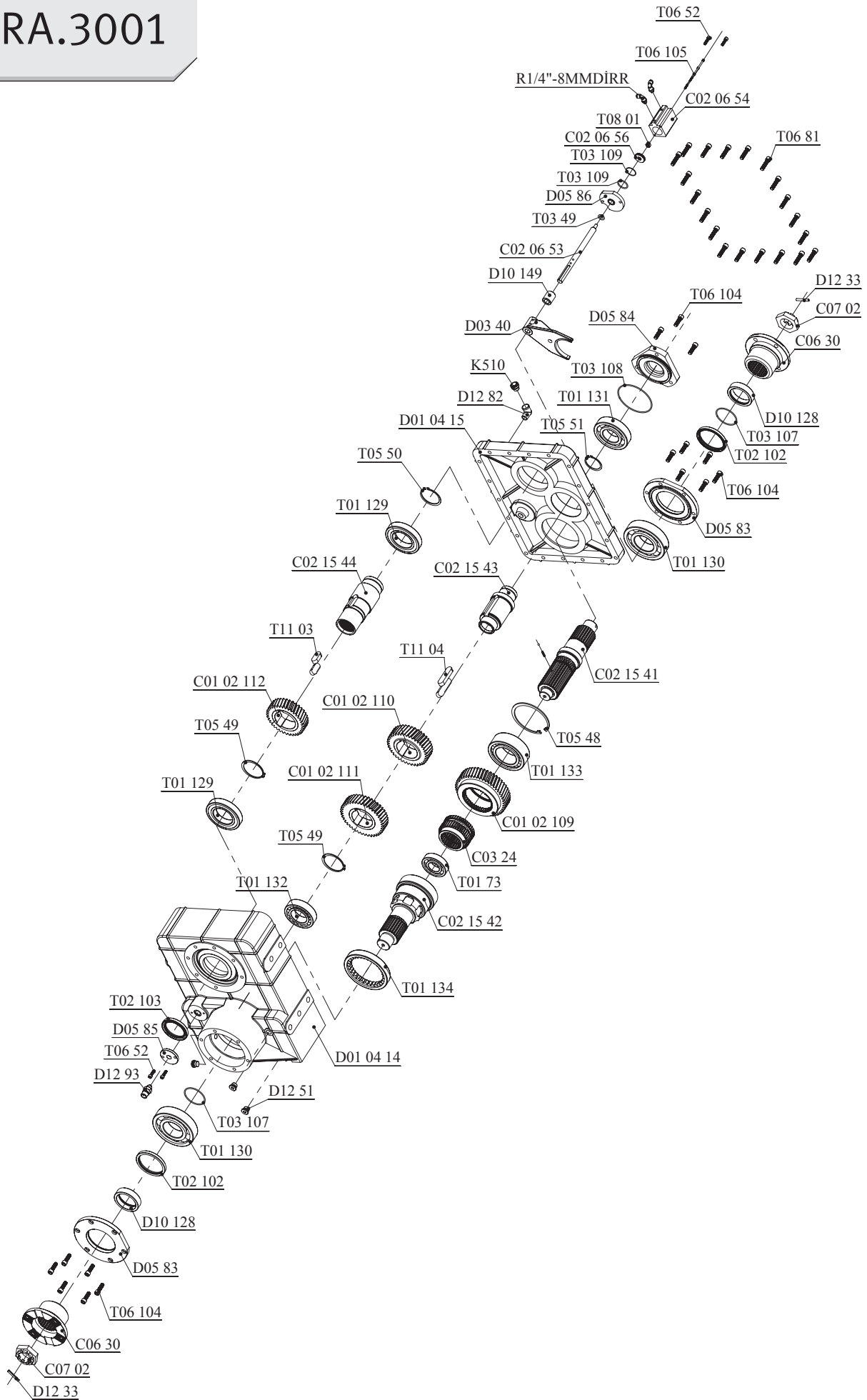
Technical Data

Power (Kw)	Maximum Torque (Kw)		Ratio	Mounting Side	Control Type
	Nm	Kgm			
1000 Dev./Dak.					
190	1765	180	1/1.46	SHAFT	PNEUMATIC
				Weight (Kg)	Rotation Sense
				150	COUNTERCLOCKWISE (CCW)



Biuro Handlowe:
TOP GEARS
 ul. Ekologiczna 8/15, 02-798 Warszawa
 Tel. +48 22 203 49 95
 email: biuro@topgears.pl
www.topgears.pl

UARA.3001

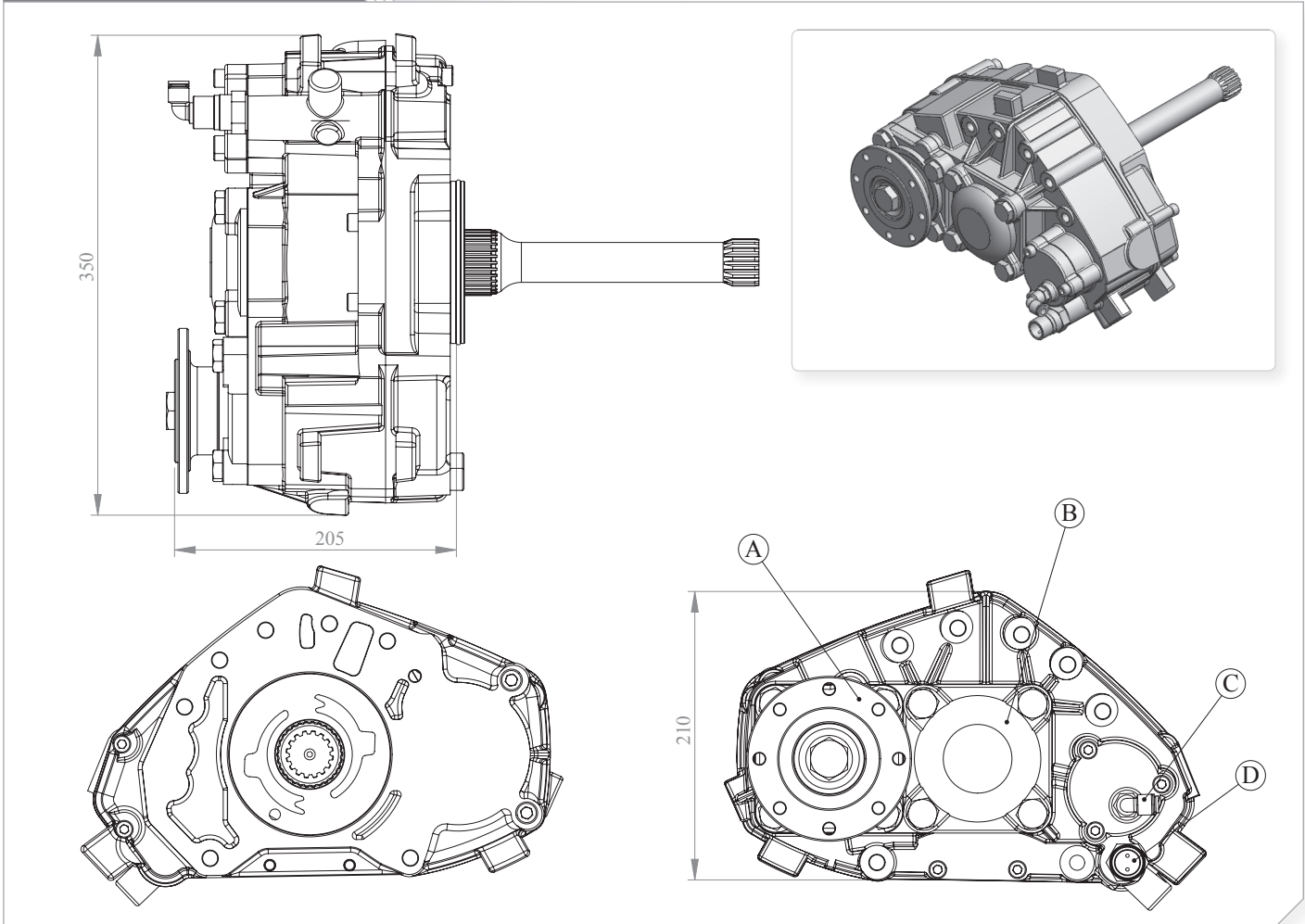


Vehicle Type	MERCEDES AXOR-ACTROSS FOR FIRE FIGHTING, FOR CESSPIT EMPTIERS VEHICLES, FOR CONCRETE PUMPS
Gearbox Type	G210-16 / G240-16 / 131 / 230 / 240

Product Code
MB.6.240



Products View



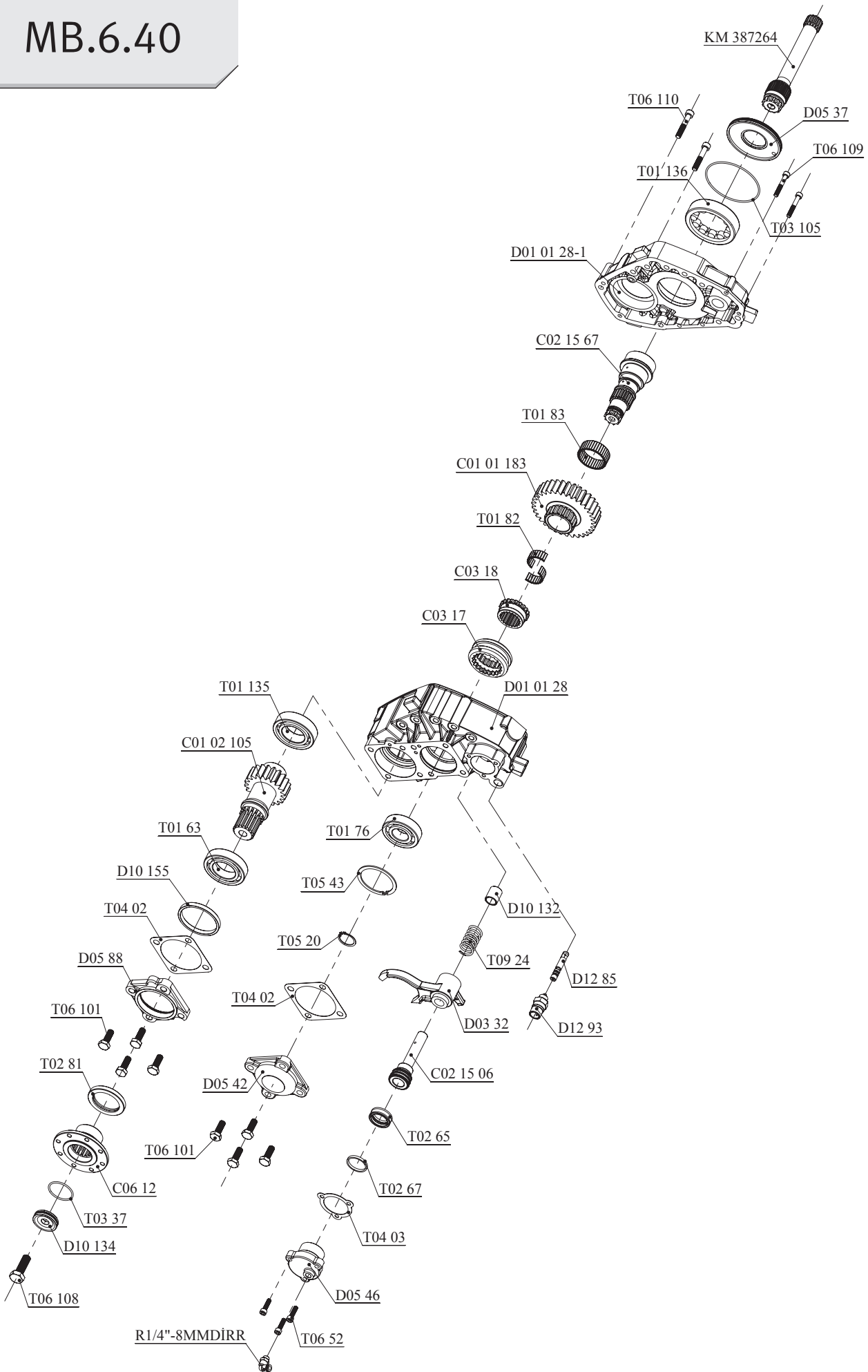
Options

- A : PTO output (DIN 120 flange) - (DIN 100)
- B : Second Output (Optional) Uni 3 bolt and ISO 4 bolt mtg. PTO
- C : Air Inlet R1/4"
- D : Passing Contact Switches

Technical Data

Power (KW) 1000 Dak.	Maksimum Tork / Maximum Torque (Kw)		Ratio	Mounting Side	Control Type
	Nm	Kgm			
88	840	85.5	1/1.65	REAR	PNEUMATIC
				Weight (Kg)	Rotation Sense
				27	COUNTERCLOCKWISE (CCW)

MB.6.40

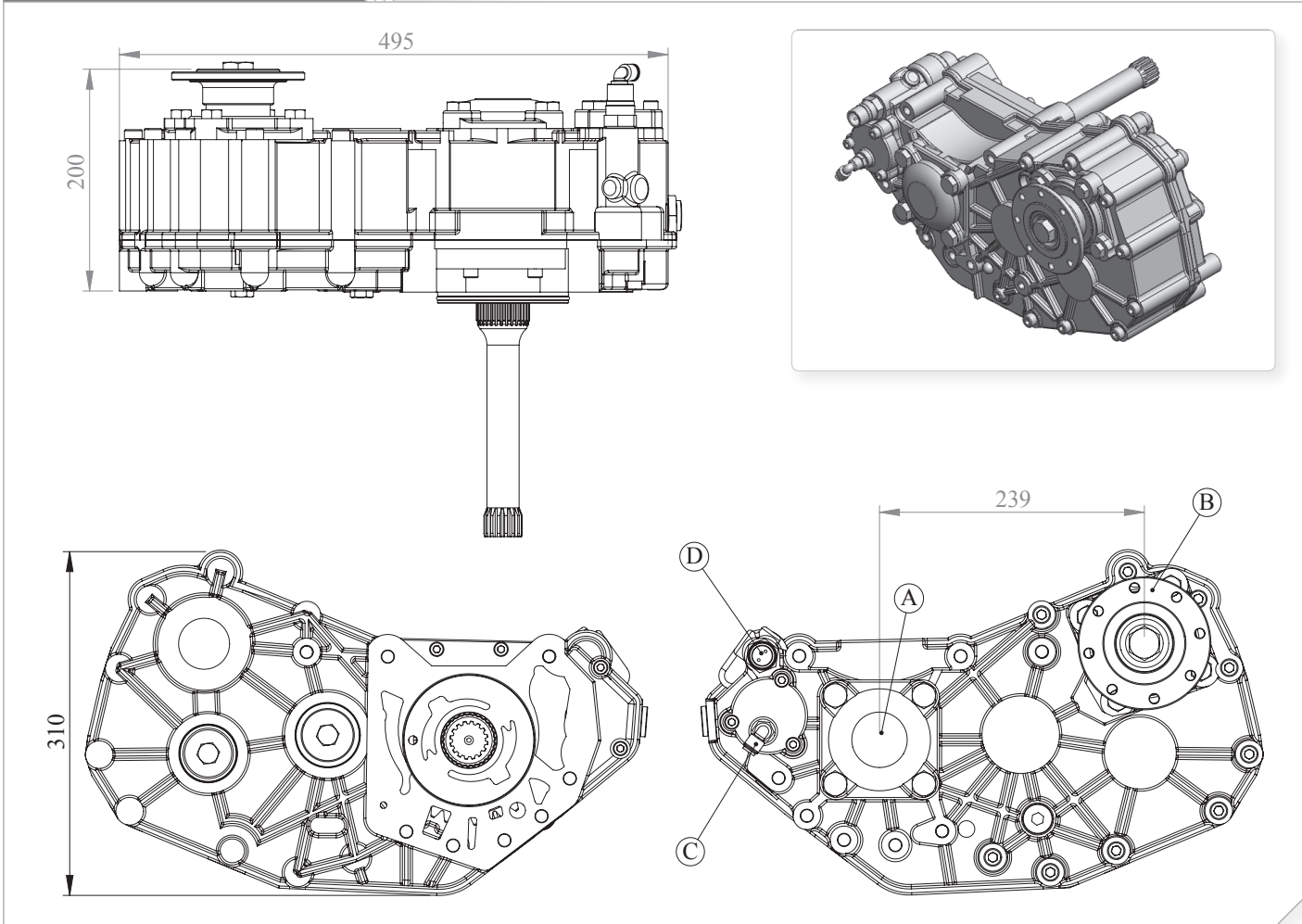


Vehicle Type	MERCEDES AXOR-ACTROSS FOR FIRE FIGHTING, FOR CESSPIT EMPTIERS VEHICLES
Gearbox Type	G210, 211, 240, 260-16(17.03-11.7-9.75) G221-9 (16.02) G131-9

Product Code
MB.8.211



Products View



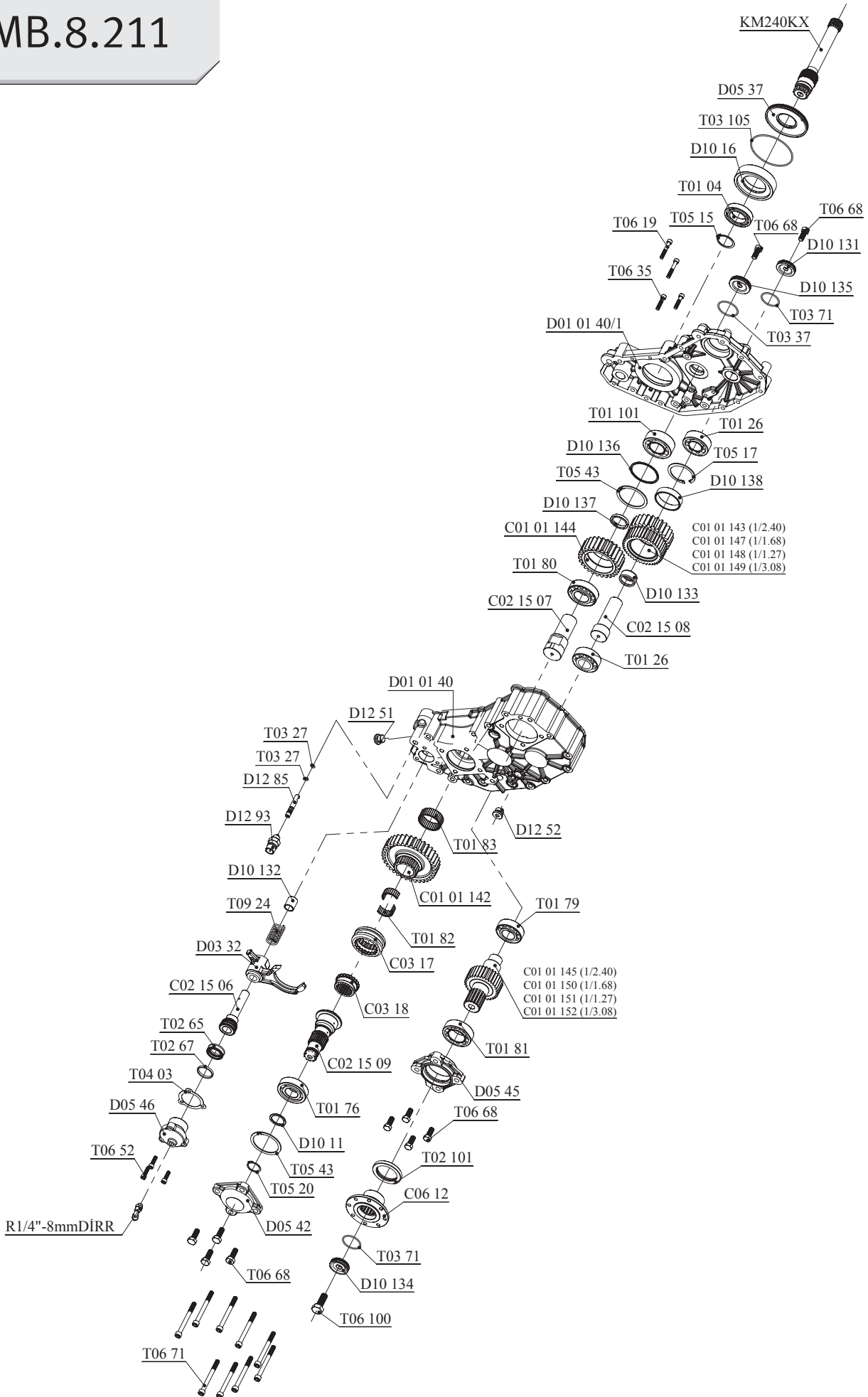
Options

<p>A : Second Output (Options) Uni 3 bolt and ISO 4 bolt mtg. PTO</p> <p>B : Flange, DIN 120-DIN 100</p> <p>C : Air Inlet R1/4"</p> <p>D : Passing Contact Switches</p>

Technical Data

Power (Kw)	Maximum Torque (Kw)		Ratio	Mounting Side	Control Type
	Nm	Kgm			
1000 Dak.					
133.6	1276	130	1/1.27	REAR	PNEUMATIC
102.8	982	100	1/1.68	Weight (Kg)	Rotation Sense
82.2	785	80	1/2.4		
61.7	589	60	1/3.08		
				40	COUNTERCLOCKWISE (CCW)

MB.8.211



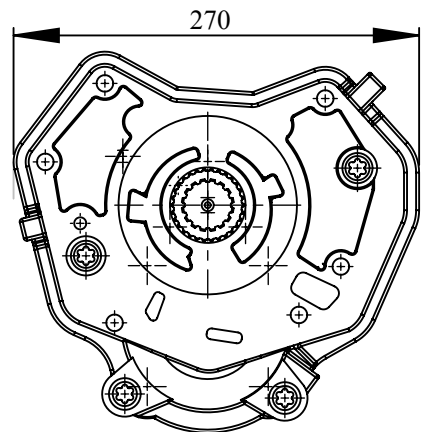
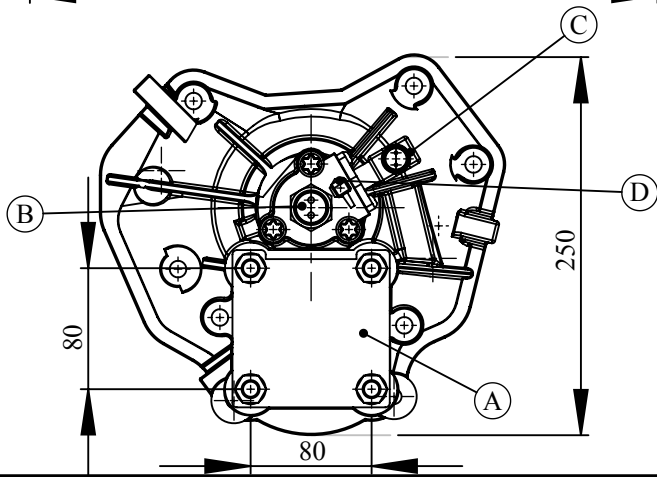
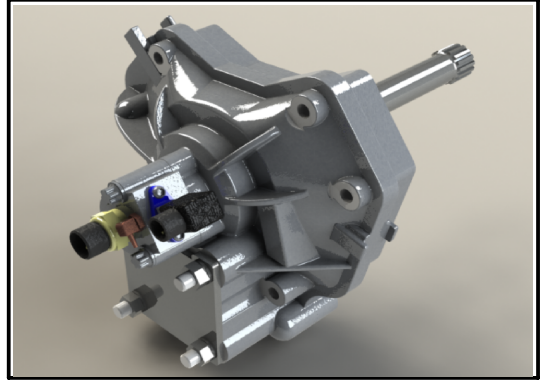
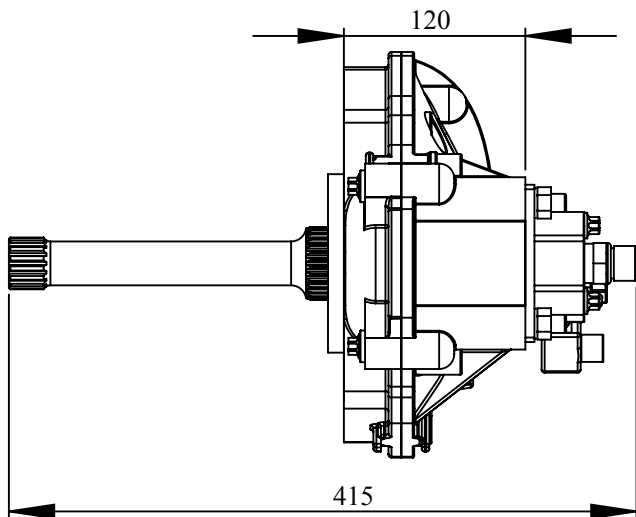
Vehicle Type:
MERCEDES AXOR-ACTROSS FOR DUMPER AND TANKER VEHICLE

Gearbox Type:
G 210,211,240,260- 16(17.03-11.9.75) G221-9 (16.02) G131-9

Product Name:

MB.9

PRODUCTS VIEW



OPTIONS

- A: Output
- B: Passing Contact Switches
- C: Air Pressure Valve
- D: Air Inlet

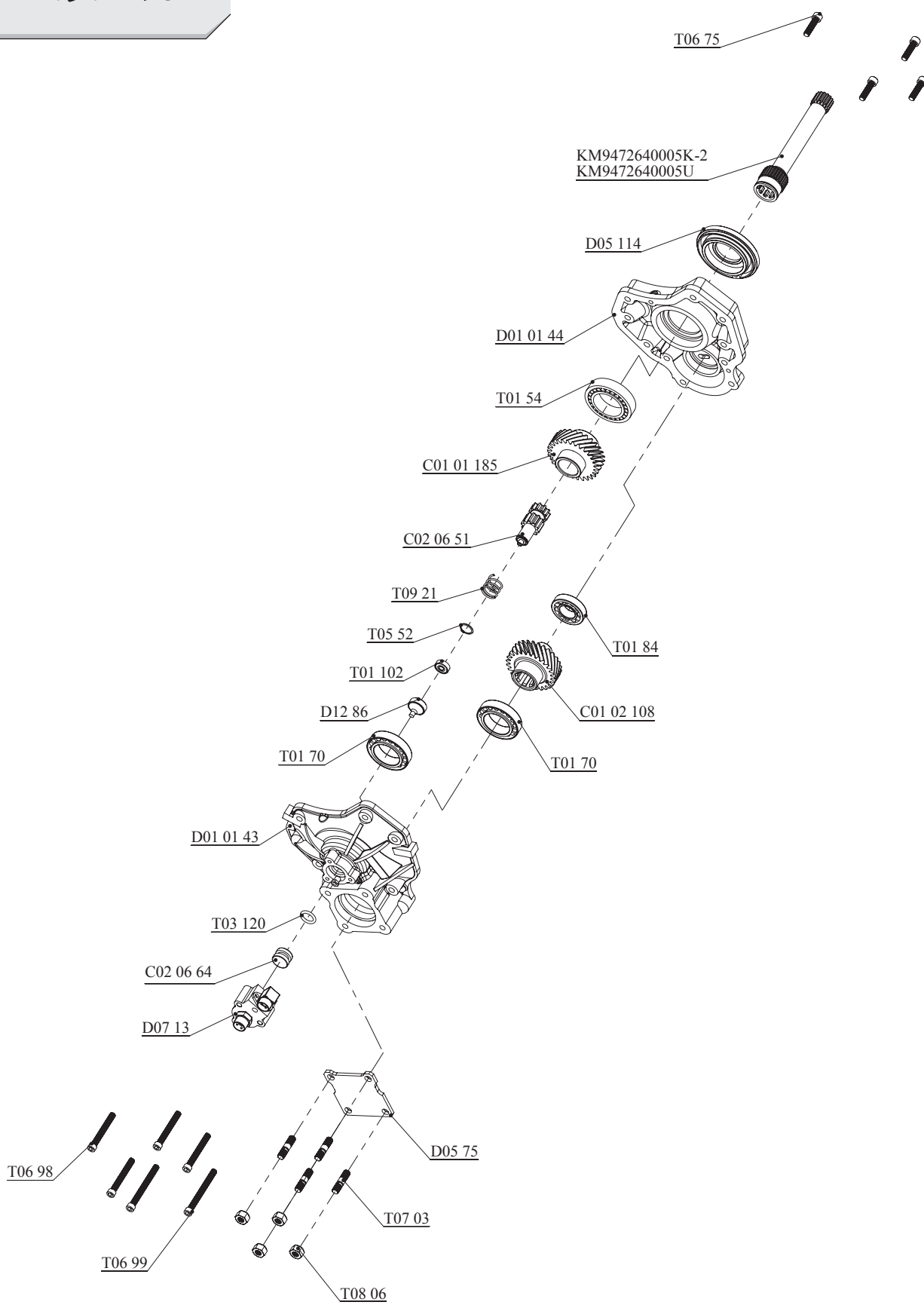
TECHNICAL DATA

(Kw) (Power) 1000 Dak.	(Max. Torque) Nm / Kgm		Ratio	Mounting Side	Control Type
	42	400		40	1/1.03
Weight			Rotation Sense		
				12,5	Sol ANTIENGINEWISE (CCW)



Biuro Handlowe:
TOP GEARS
ul. Ekologiczna 8/15, 02-798 Warszawa
Tel. +48 22 203 49 95
email: biuro@topgears.pl
www.topgears.pl

MB.9.240

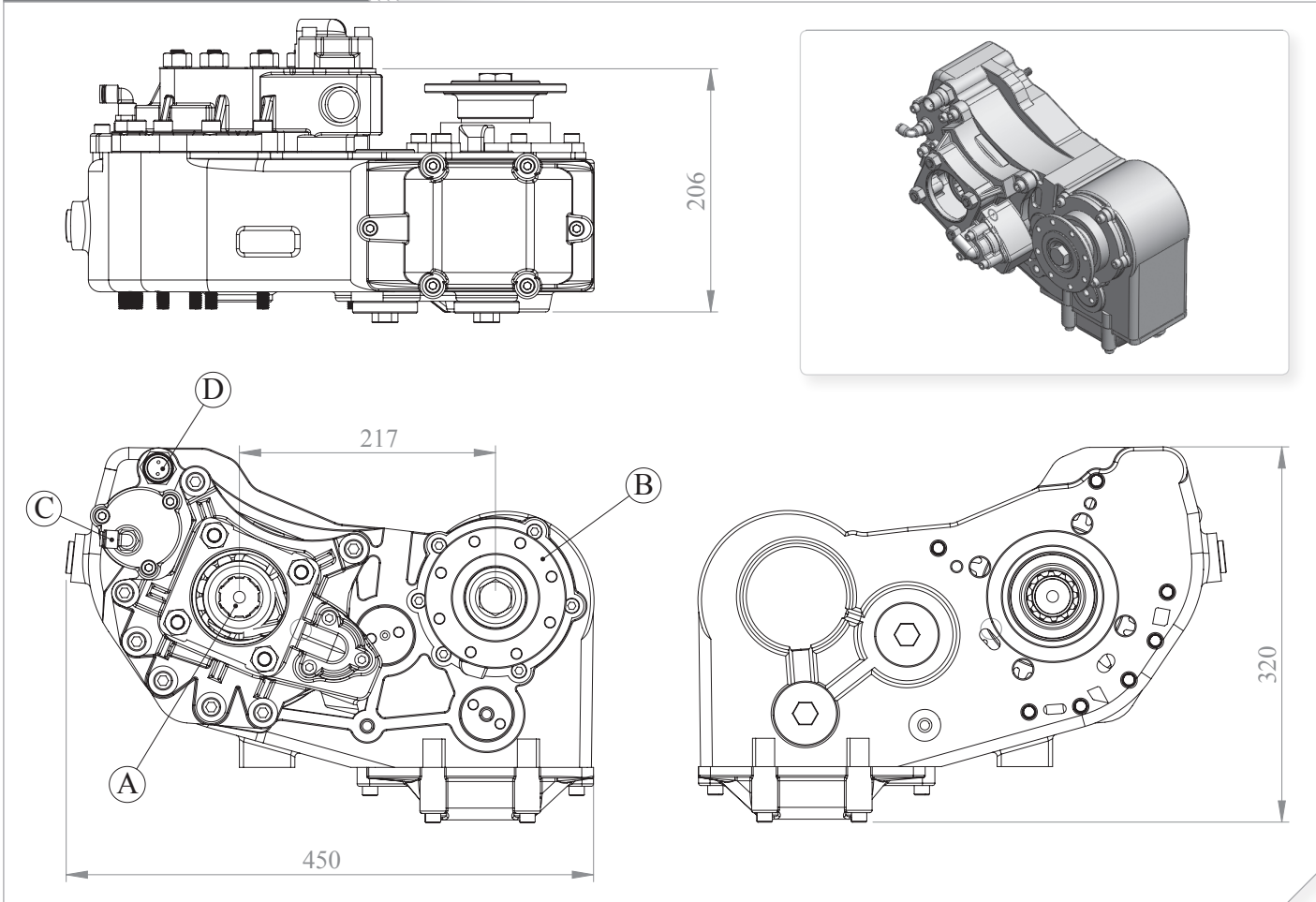


Vehicle Type	MERCEDES AXOR-ACTROSS FOR FIRE FIGHTING, FOR CESSPIT EMPTIERS VEHICLES
Gearbox Type	G155 GV4

Product Code
MB.10.465



Products View



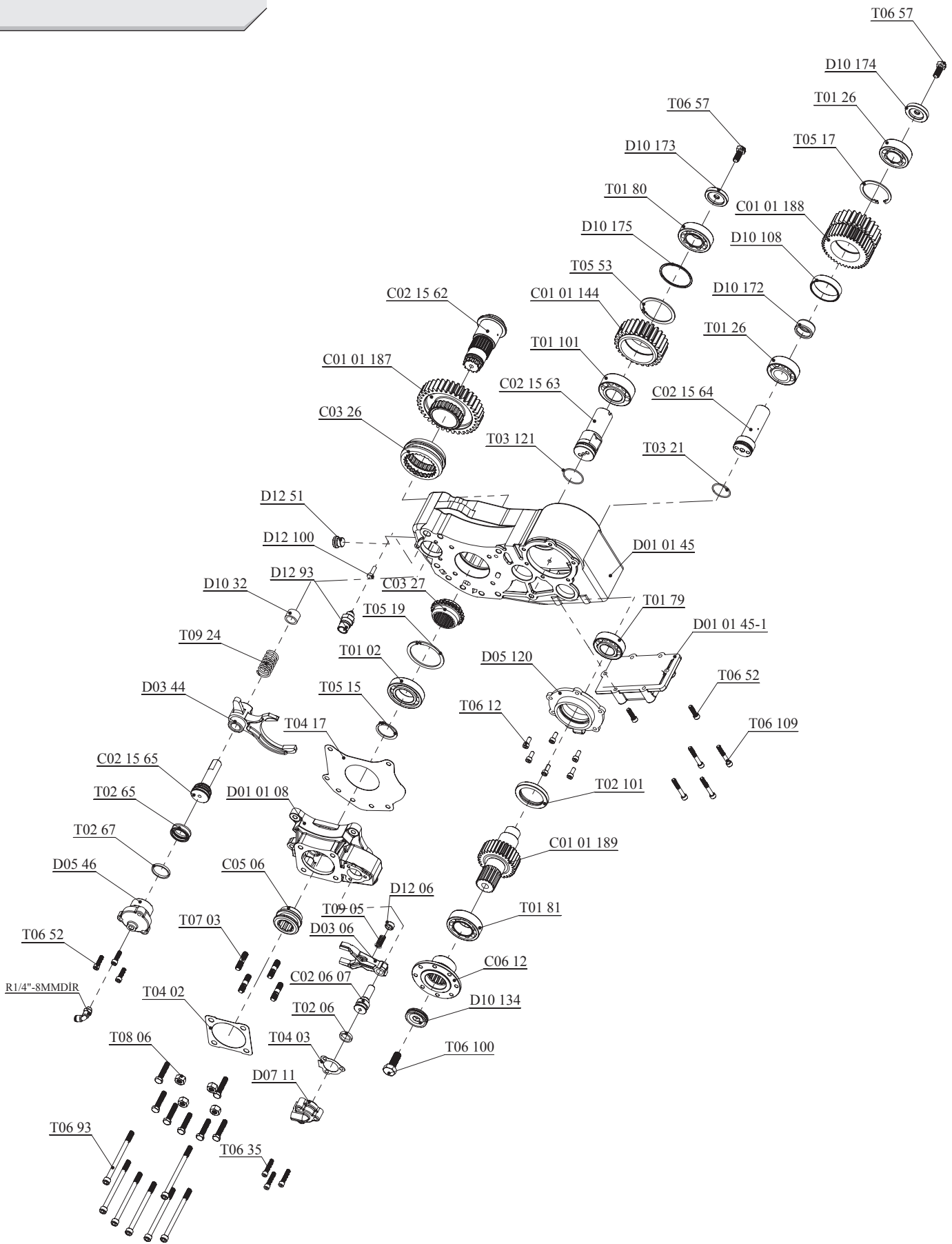
Options

<p>A: PTO Output (Standard DIN 5462 8X32X36 ISO 4 Bolt) Direct mounting UNI 3 bolt mtg. adapter Drive flange</p> <p>B: Flange, DIN 120-DIN 100</p> <p>C: Air Inlet R1/4"</p> <p>D: Passing Contact Switches</p>

Technical Data

Power (Kw) 1000 Dev./Dak.	Maximum Torque (Kw)		Ratio	Mounting Side	Control Type
	Nm	Kgm			
100	955	97	1/1.78	REAR	PNEUMATIC
				Weight (Kg)	Rotation Sense
				60	COUNTERCLOCKWISE (CCW)

MB.10.465

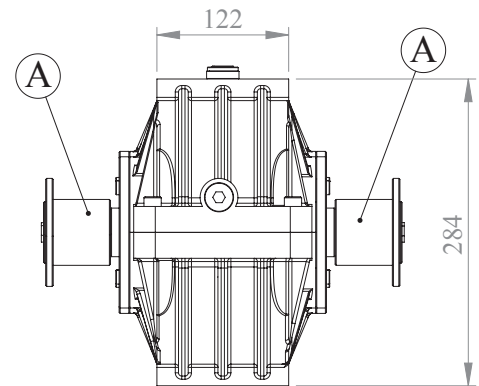
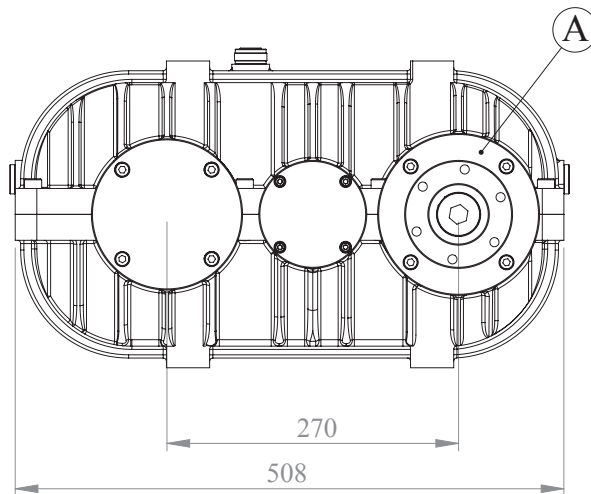
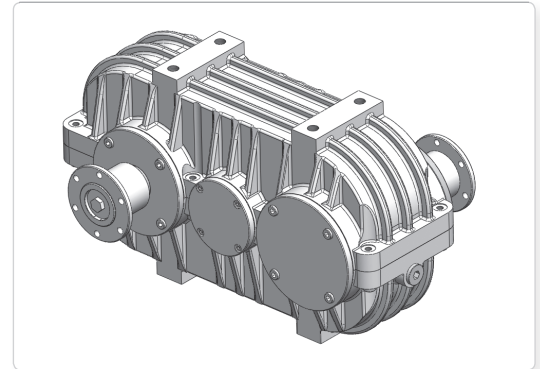
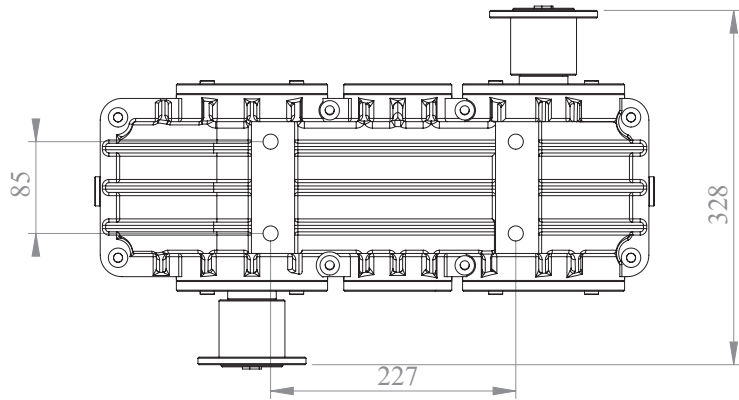


Vehicle Type	UNIVERSAL REDUCTOR
Gearbox Type	

Product Code	KRD.01
--------------	---------------



Products View



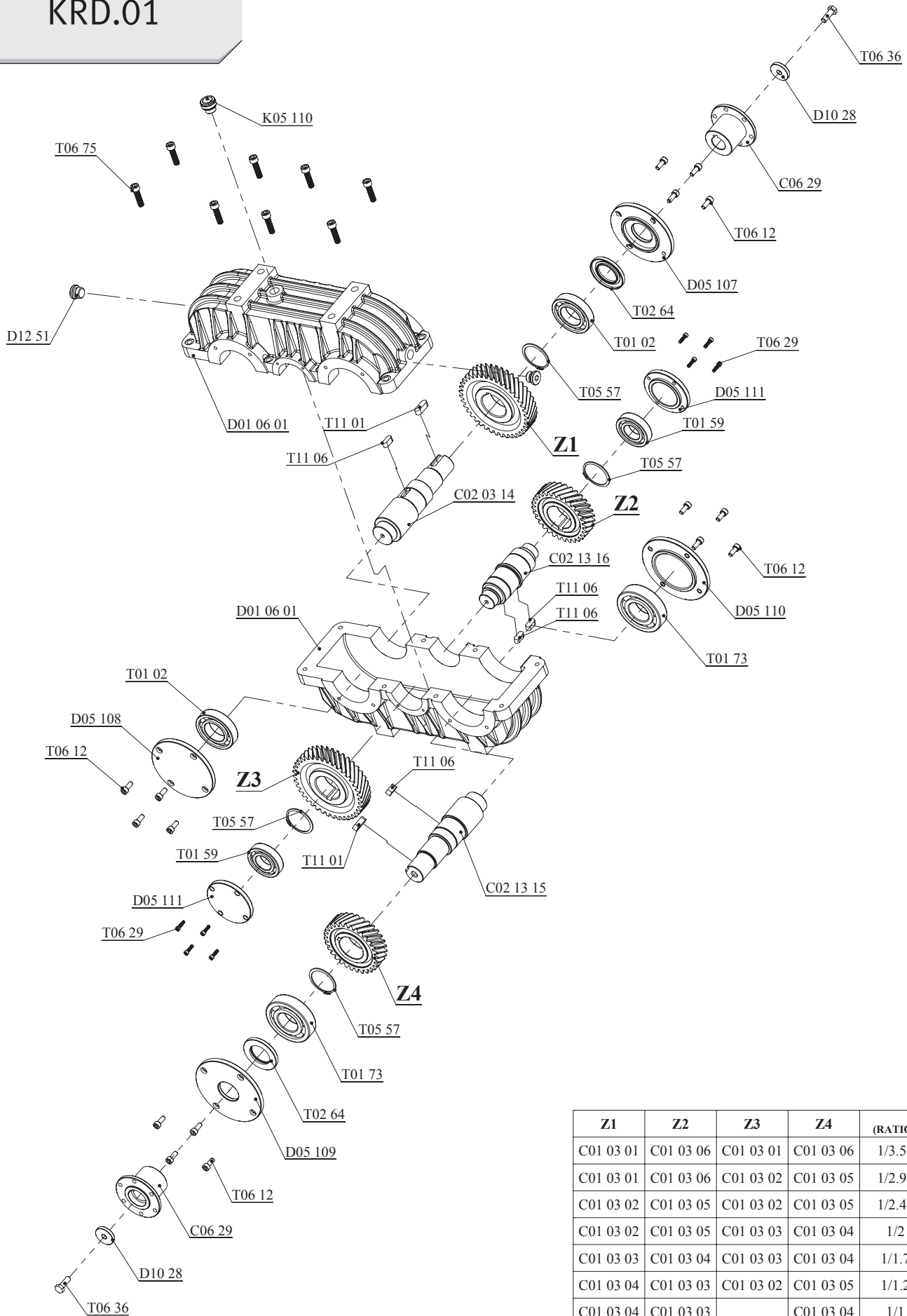
Options

<p>A : Reduktor Input and Output Flanged (DIN100 6Bolts) (Optional)</p>	
--	--

Technical Data

Power (Kw)	Maximum Torque (Kw)		Ratio		Mounting Side	Control Type
	Nm	Kgm				
1000 Dak.						
50	477	48	1/3.51	1/1.7	SHAFT	DIRECT
			1/2.91	1/1.2		Weight (Kg)
			1/2.41	1/1	43	CW – CCW
			1/2			

KRD.01



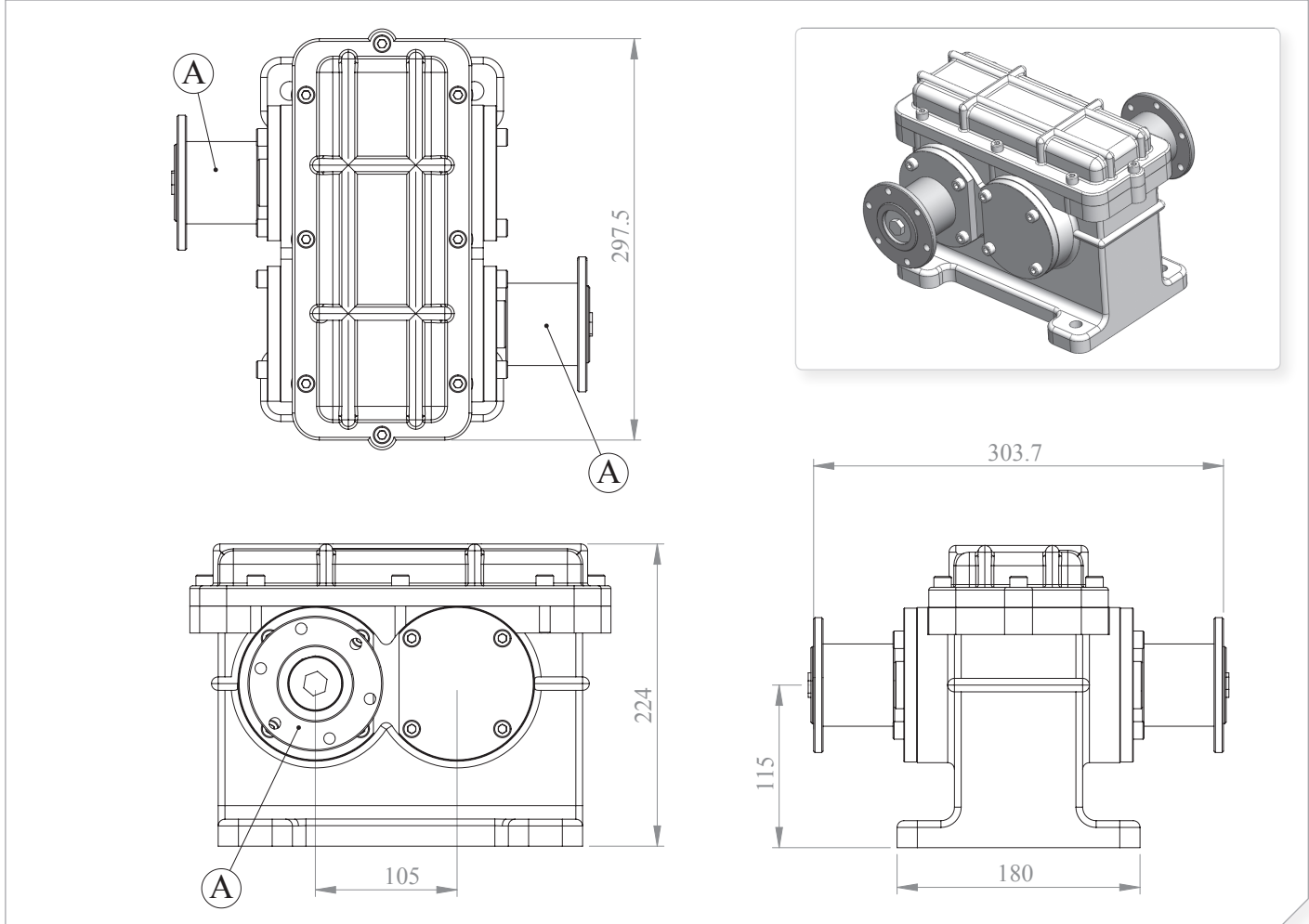
Z1	Z2	Z3	Z4	(RATIO)
C01 03 01	C01 03 06	C01 03 01	C01 03 06	1/3.51
C01 03 01	C01 03 06	C01 03 02	C01 03 05	1/2.91
C01 03 02	C01 03 05	C01 03 02	C01 03 05	1/2.41
C01 03 02	C01 03 05	C01 03 03	C01 03 04	1/2
C01 03 03	C01 03 04	C01 03 03	C01 03 04	1/1.7
C01 03 04	C01 03 03	C01 03 02	C01 03 05	1/1.2
C01 03 04	C01 03 03		C01 03 04	1/1

Vehicle Type	UNIVERSAL REDUCTOR
Gearbox Type	

Product Code	KRD.02
--------------	--------



Products View



Options

	A : Reduktor Input and Output Flanged (DIN100 6Bolts)
--	---

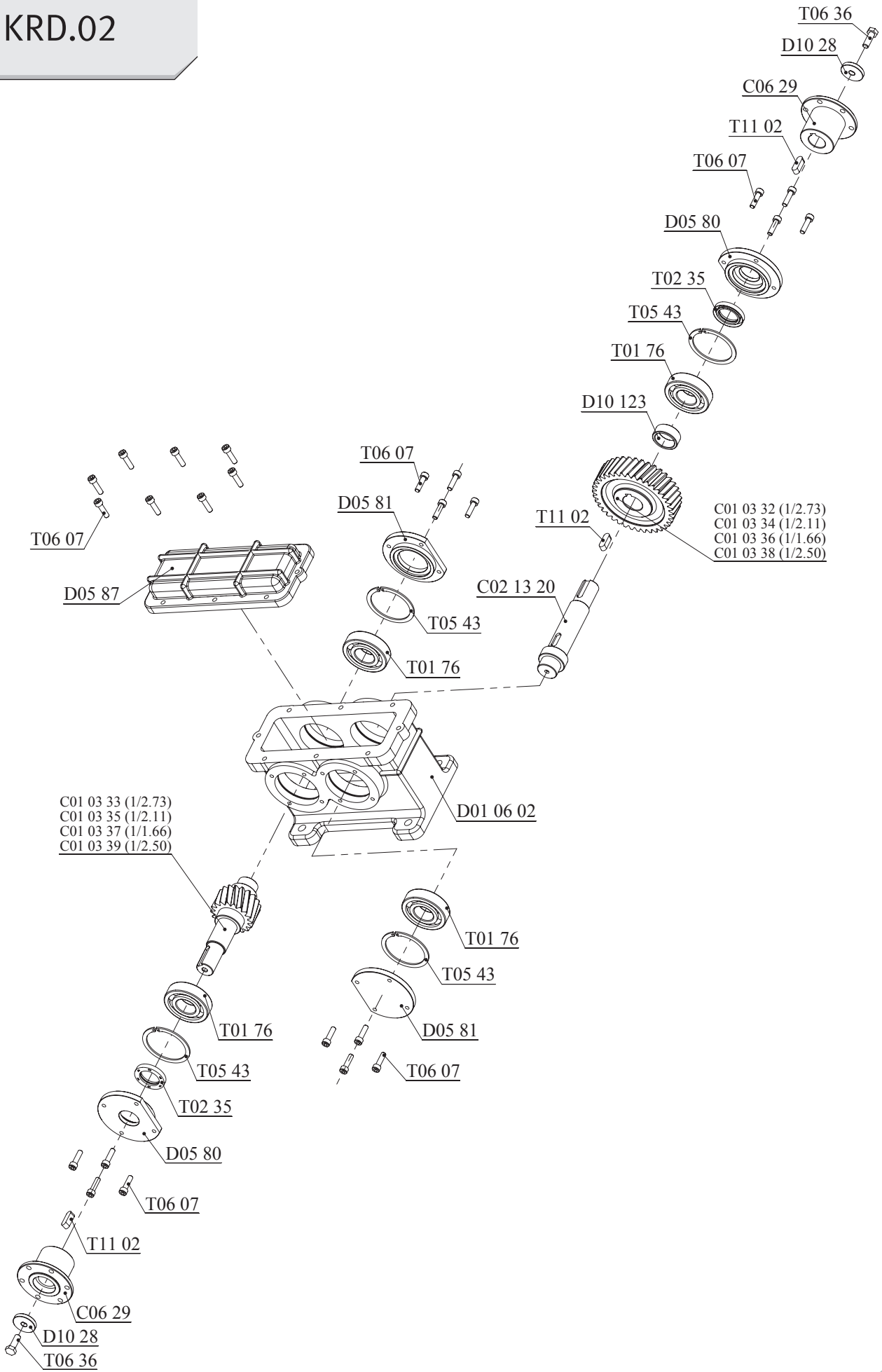
Technical Data

Power (Kw)	Maximum Torque (Kw)		Ratio	Mounting Side	Control Type
	Nm	Kgm			
1000 Dak.					
49.8	475	48.5	1/1.66	SHAFT	DIRECT
42.3	403.8	41.1	1/2.11	Weight (Kg)	Rotation Sense
37	353	36	1/2.50		
34.3	327.7	33.4	1/2.73		
				36	CLOCKWISE (CW)



Biuro Handlowe:
TOP GEARS
 ul. Ekologiczna 8/15, 02-798 Warszawa
 Tel. +48 22 203 49 95
 email: biuro@topgears.pl
www.topgears.pl

KRD.02

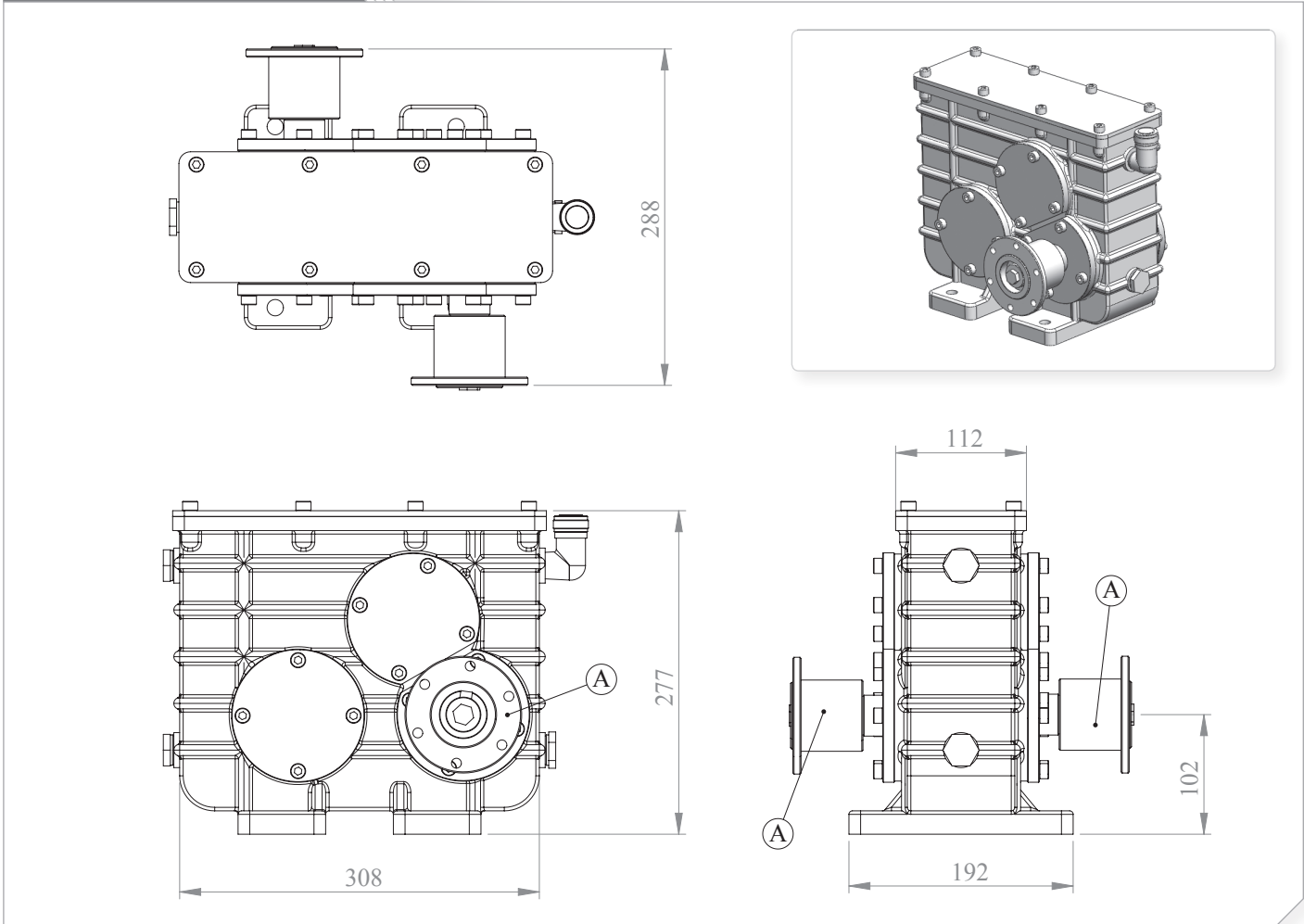


Vehicle Type	UNIVERSAL REDUCTOR
Gearbox Type	

Product Code
KRD.03



Products View



Options

A : Reduktor Input and Output Flanged (DIN100 6Bolts)

Technical Data

Power (kw)	Maximum Torque (Kw)		Ratio	Mounting Side	Control Type
	Nm	Kgm			
1000 Dak.					
50	477.5	48.6	1/1.91	SHAFT	DIRECT
				Weight (Kg)	Rotation Sense
				42	COUNTERCLOCKWISE (CCW)



Biuro Handlowe:
TOP GEARS
ul. Ekologiczna 8/15, 02-798 Warszawa
Tel. +48 22 203 49 95
email: biuro@topgears.pl
www.topgears.pl



KOZANOĞLU
KOZMAKSAN
HYDRAULIC PUMPS & POWER TAKE-OFFS MANUFACTURING LIMITED CO.
HİDROLİK POMPA ve ARA ŞANZİMAN PTO İMALAT SAN.LTD.ŞTİ.



Aracınızı Farklı Kılan Güç...